



# INTERNATIONAL GEMOLOGICAL INSTITUTE

## LABORATORY GROWN DIAMOND REPORT

December 2, 2025  
IGI Report Number **LG752586060**  
Description **LABORATORY GROWN DIAMOND**  
Shape and Cutting Style **OVAL BRILLIANT**  
Measurements **7.01 X 4.83 X 2.93 MM**

### GRADING RESULTS

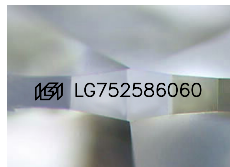
Carat Weight **0.63 CARAT**  
Color Grade **E**  
Clarity Grade **VS 1**

### ADDITIONAL GRADING INFORMATION

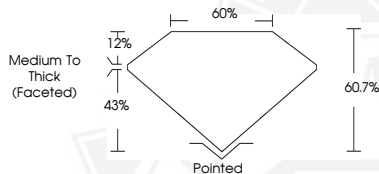
Polish **GOOD**  
Symmetry **GOOD**  
Fluorescence **NONE**  
Inscription(s) **IGI LG752586060**

Comments: This Laboratory Grown Diamond was created by Chemical Vapor Deposition (CVD) growth process. Type IIa

ELECTRONIC COPY



Sample Image Used



December 2, 2025

IGI Report Number **LG752586060**

**OVAL BRILLIANT**

**LABORATORY GROWN DIAMOND**

**7.01 X 4.83 X 2.93 MM**

Carat Weight **0.63 CARAT**

Color Grade **E**

Clarity Grade **VS 1**

Polish **GOOD**

Symmetry **GOOD**

Fluorescence **NONE**

Inscription(s) **IGI LG752586060**

Comments: This Laboratory Grown Diamond was created by Chemical Vapor Deposition (CVD) growth process. Type IIa



December 2, 2025

IGI Report Number **LG752586060**

**OVAL BRILLIANT**

**LABORATORY GROWN DIAMOND**

**7.01 X 4.83 X 2.93 MM**

Carat Weight **0.63 CARAT**

Color Grade **E**

Clarity Grade **VS 1**

Polish **GOOD**

Symmetry **GOOD**

Fluorescence **NONE**

Inscription(s) **IGI LG752586060**

Comments: This Laboratory Grown Diamond was created by Chemical Vapor Deposition (CVD) growth process. Type IIa



THIS DOCUMENT WAS PRODUCED WITH THE FOLLOWING SECURITY MEASURES: SPECIAL DOCUMENT PAPER, INK SCREENS, WATERMARK, BACKGROUND DESIGNS, HOLOGRAM AND OTHER SECURITY FEATURES NOT LISTED AND DO EXCEED DOCUMENT SECURITY INDUSTRY GUIDELINES.

For terms & conditions and to verify this report, please visit [www.igi.org](http://www.igi.org)