

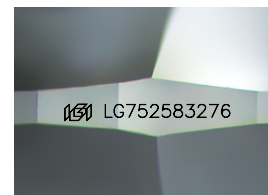
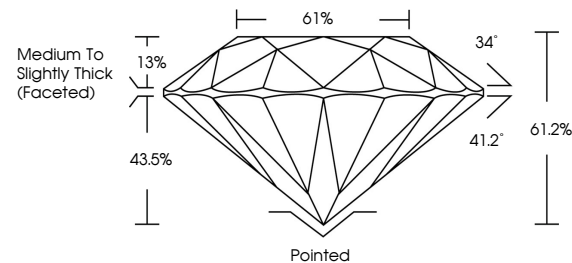


ELECTRONIC COPY

LABORATORY GROWN DIAMOND REPORT

LG752583276
Report verification at igi.org

PROPORTIONS



Sample Image Used

COLOR

D E F G H I J Faint Very Light Light

CLARITY

FL	IF	VVS ¹⁻²	VS ¹⁻²	SI ¹⁻²	I ¹⁻³
Flawless	Internally Flawless	Very Very Slightly Included	Very Slightly Included	Slightly Included	Included



© IGI 2020, International Gemological Institute

FD - 10 20

www.igi.org

LABORATORY GROWN DIAMOND REPORT



December 9, 2025

IGI Report Number **LG752583276**Description **LABORATORY GROWN DIAMOND**Shape and Cutting Style **ROUND BRILLIANT**

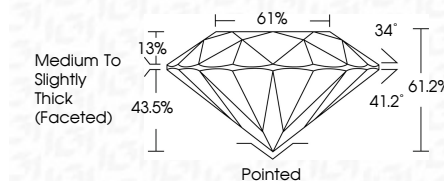
Measurements 8.04 - 8.12 X 4.95 MM

GRADING RESULTS

Carat Weight **2.01 CARATS**

Color Grade **E**Clarity Grade WS 2

Cut Grade **EXCELLENT**



ADDITIONAL GRADING INFORMATION

Polish **EXCELLENT**Symmetry **EXCELLENT**Fluorescence NONInscription(s) LG752583276

Comments: As Grown - No indication of post-growth treatment.

This Laboratory Grown Diamond was created by High Pressure High Temperature (HPHT) growth process.

Type II



December 9, 2025	2.01 CARATS	Polished
GI Report No. 1575938276	E	EXCELLENT
ROUND BRILLIANT	VVS 2	EXCELLENT
	Clarity Grade	61.2%
	Color Grade	61%
	Depth	Medium to Slightly Thick (faceted)
	Table	
	Girdle	
	Culet	
	Polish	
	Symmetry	
	Fluorescence	
	Inscriptions(s)	
	Comments:	
		is Grown- No indication of post-growth
		This Laboratory Grown Diamond was
		created by High Pressure High
		temperature (HPHT) growth process.
		Type II