



**INTERNATIONAL
GEMOLOGICAL
INSTITUTE**

ELECTRONIC COPY

LG752583094
Report verification at igi.org

LABORATORY GROWN DIAMOND REPORT



December 8, 2025

IGI Report Number **LG752583094**

Description	LABORATORY GROWN DIAMOND
-------------	--------------------------

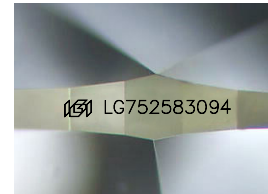
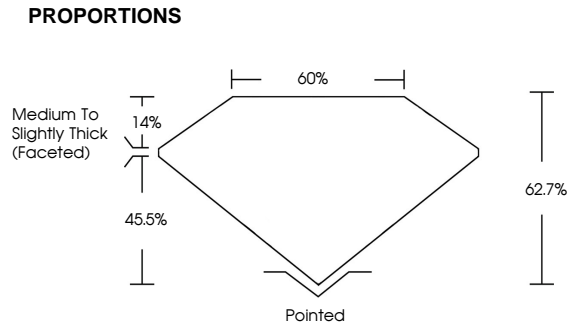
Shape and Cutting Style **PEAR BRILLIANT**

Measurements 10.48 X 6.54 X 4.10 MM

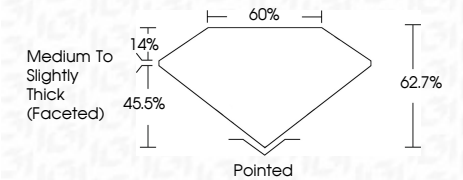
GRADING RESULTS

Carat Weight **1.65 CARAT**

Color Grade **D**

Clarity Grade VVS 2

Sample Image Used



COLOR

D E F G H I J Faint Very Light Light

CLARITY

FL IF VWS¹⁻² VS¹⁻² SI¹⁻² I¹⁻³

Flawless	Internally Flawless	Very Slightly Included	Very Slightly Included	Slightly Included	Included
----------	---------------------	------------------------	------------------------	-------------------	----------

ADDITIONAL GRADING INFORMATION

Polish **EXCELLENT**Symmetry **EXCELLENT**Fluorescence **NONE**Inscription(s) LG752583094

Comments: This Laboratory Grown Diamond was created by Chemical Vapor Deposition (CVD) growth process.
Type IIa



IGI



© IGI 2020, International Gemological Institute

FD - 10 20



THIS DOCUMENT WAS PRODUCED WITH THE FOLLOWING SECURITY MEASURES: SPECIAL DOCUMENT PAPER, INK SCREENS, WATERMARK BACKGROUND DESIGNS, HOLOGRAM AND OTHER SECURITY FEATURES NOT LISTED AND DO EXCEED DOCUMENT SECURITY INDUSTRY GUIDELINES

December 8, 2025
IGI Report No LG752583094
PEAR BRILLIANT

10.48 X 6.54 X 4.10 MM	Carat Weight	1.65 CARAT
	Color Grade	D
	Clarity Grade	VVS 2
	Depth	62.7%
	Table	60%
	Girdle	Medium To Slightly Thick (Faceted)
	Culet	Pointed
	Polish	EXCELLENT
	Symmetry	EXCELLENT
	Fluorescence	NONE
	Inscription(s)	1691 LG752683094

Comments:
This Laboratory Grown Diamond was
created by Chemical Vapor Deposition
(CVD) growth process.
Type IIa

www.igi.org