



ELECTRONIC COPY

LABORATORY GROWN DIAMOND REPORT

LG752582841
Report verification at igi.org

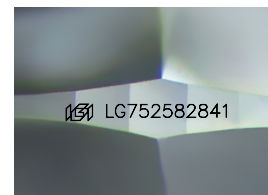
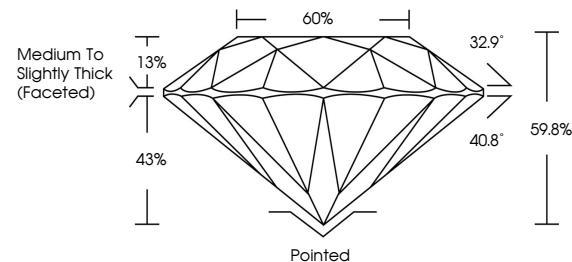
| | |
|-------------------------|--------------------------|
| November 28, 2025 | |
| IGI Report Number | LG752582841 |
| Description | LABORATORY GROWN DIAMOND |
| Shape and Cutting Style | ROUND BRILLIANT |
| Measurements | 11.07 - 11.12 X 6.63 MM |
| GRADING RESULTS | |
| Carat Weight | 5.02 CARATS |
| Color Grade | E |
| Clarity Grade | VVS 2 |
| Cut Grade | IDEAL |

ADDITIONAL GRADING INFORMATION

| | |
|----------------|-----------------|
| Polish | EXCELLENT |
| Symmetry | EXCELLENT |
| Fluorescence | NONE |
| Inscription(s) | 151 LG752582841 |

Comments: This Laboratory Grown Diamond was created by Chemical Vapor Deposition (CVD) growth process.
Type IIa

PROPORTIONS



Sample Image Used

COLOR

D E F G H I J Faint Very Light Light

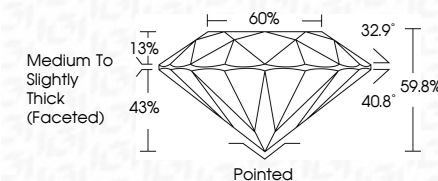
CLARITY

| FL | IF | VVS ¹⁻² | VS ¹⁻² | SI ¹⁻² | I ¹⁻³ |
|----------|---------------------|-----------------------------|------------------------|-------------------|------------------|
| Flawless | Internally Flawless | Very Very Slightly Included | Very Slightly Included | Slightly Included | Included |

LABORATORY GROWN DIAMOND REPORT



| | |
|-------------------------|--------------------------|
| November 28, 2025 | |
| IGI Report Number | LG752582841 |
| Description | LABORATORY GROWN DIAMOND |
| Shape and Cutting Style | ROUND BRILLIANT |
| Measurements | 11.07 - 11.12 X 6.63 MM |
| GRADING RESULTS | |
| Carat Weight | 5.02 CARATS |
| Color Grade | E |
| Clarity Grade | VVS 2 |
| Cut Grade | IDEAL |



ADDITIONAL GRADING INFORMATION

| | |
|--|---|
| Polish | EXCELLENT |
| Symmetry | EXCELLENT |
| Fluorescence | NONE |
| Inscription(s) |  LG752582841 |
| Comments: This Laboratory Grown Diamond was created by Chemical Vapor Deposition (CVD) growth process. | |
| Type IIa | |



© IGI 2020, International Gemological Institute

FD - 10 20



THIS DOCUMENT WAS PRODUCED WITH THE FOLLOWING SECURITY MEASURES: SPECIAL DOCUMENT PAPER, INK SCREENS, WATERMARK, BACKGROUND DESIGNS, HOLOGRAM, AND OTHER SECURITY FEATURES NOT LISTED AND DO EXCEED DOCUMENT SECURITY INDUSTRY GUIDELINES.

www.igi.org

November 28, 2025
GI Report No LG752582841
ROUND BRILLIANT

11.07 - 11.12 X 6.63 MM

11.07 - 11.12 X 6.63 MM
Carat Weight 5.02 CARATS

| Color Grade | E |
|-------------|---|
|-------------|---|

| | WS2 |
|---------------|-----|
| Clarity Grade | |

| | |
|-----------|-------|
| Cut Grade | IDEAL |
| Depth | 59.8% |

| Depth | 69.8% |
|-------|-------|
| Table | 60% |

Girdle Medium To Slightly Thick (Faceted)

| | Thick (Faceted) | Pointed |
|-------|-----------------|---------|
| Culet | | |

| | |
|--------|-----------|
| Culet | Pointed |
| Polish | EXCELLENT |

| | |
|----------|-----------|
| Symmetry | EXCELLENT |
| Glaze | NONE |

| Fluorescence | NONE |
|----------------|-----------------|
| Inscription(s) | 151 LG752582841 |

Comments:

Comments:
This Laboratory Grown Diamond was
certified by Chemical Vapor Deposition

created by Chemical Vapor Deposition (CVD) growth process.

Type IIa