



INTERNATIONAL GEMOLOGICAL INSTITUTE

ELECTRONIC COPY

LABORATORY GROWN DIAMOND REPORT

December 4, 2025
IGI Report Number **LG752579444**
Description **LABORATORY GROWN DIAMOND**
Shape and Cutting Style **HEART MODIFIED BRILLIANT**
Measurements **4.39 X 4.79 X 2.67 MM**

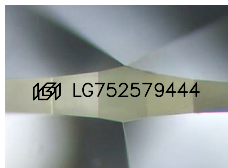
GRADING RESULTS

Carat Weight **0.44 CARAT**
Color Grade **FANCY LIGHT BROWN PINK**
Clarity Grade **VS 1**

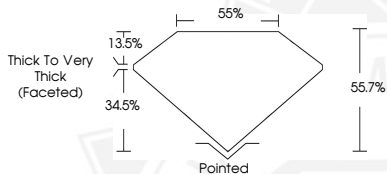
ADDITIONAL GRADING INFORMATION

Polish **VERY GOOD**
Symmetry **VERY GOOD**
Fluorescence **SLIGHT**
Inscription(s) **IGI LG752579444**

Comments: This Laboratory Grown Diamond was created by Chemical Vapor Deposition (CVD) growth process. Indications of post-growth treatment.



Sample Image Used



December 4, 2025

IGI Report Number **LG752579444**
HEART MODIFIED BRILLIANT
LABORATORY GROWN DIAMOND
4.39 X 4.79 X 2.67 MM

Carat Weight **0.44 CARAT**
Color Grade **FANCY LIGHT BROWN PINK**
Clarity Grade **VS 1**
Polish **VERY GOOD**
Symmetry **VERY GOOD**
Fluorescence **SLIGHT**
Inscription(s) **IGI LG752579444**

Comments: This Laboratory Grown Diamond was created by Chemical Vapor Deposition (CVD) growth process. Indications of post-growth treatment.



December 4, 2025

IGI Report Number **LG752579444**
HEART MODIFIED BRILLIANT
LABORATORY GROWN DIAMOND
4.39 X 4.79 X 2.67 MM

Carat Weight **0.44 CARAT**
Color Grade **FANCY LIGHT BROWN PINK**
Clarity Grade **VS 1**
Polish **VERY GOOD**
Symmetry **VERY GOOD**
Fluorescence **SLIGHT**
Inscription(s) **IGI LG752579444**

Comments: This Laboratory Grown Diamond was created by Chemical Vapor Deposition (CVD) growth process. Indications of post-growth treatment.



THIS DOCUMENT WAS PRODUCED WITH THE FOLLOWING SECURITY MEASURES: SPECIAL DOCUMENT PAPER, INK SCREENS, WATERMARK, BACKGROUND DESIGNS, HOLOGRAM AND OTHER SECURITY FEATURES NOT LISTED AND DO EXCEED DOCUMENT SECURITY INDUSTRY GUIDELINES.

For terms & conditions and to verify this report, please visit www.igi.org