



ELECTRONIC COPY

LG752575277
Report verification at igi.org



December 16, 2025
IGI Report Number LG752575277
Description LABORATORY GROWN DIAMOND
Shape and Cutting Style ROUND BRILLIANT
Measurements 9.35 - 9.38 X 5.68 MM
GRADING RESULTS
Carat Weight 3.05 CARATS
Color Grade D
Clarity Grade VVS 2
Cut Grade IDEAL

LABORATORY GROWN DIAMOND REPORT

December 16, 2025
IGI Report Number LG752575277
Description LABORATORY GROWN DIAMOND
Shape and Cutting Style ROUND BRILLIANT
Measurements 9.35 - 9.38 X 5.68 MM

GRADING RESULTS

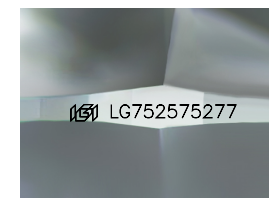
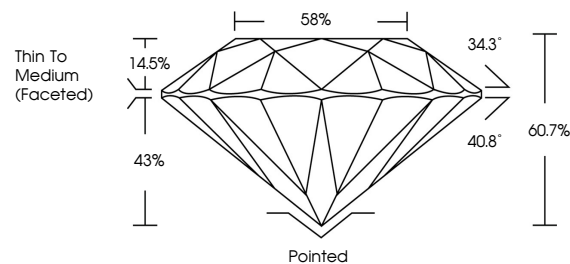
Carat Weight 3.05 CARATS
Color Grade D
Clarity Grade VVS 2
Cut Grade IDEAL

ADDITIONAL GRADING INFORMATION

Polish EXCELLENT
Symmetry EXCELLENT
Fluorescence NONE
Inscription(s) LG752575277

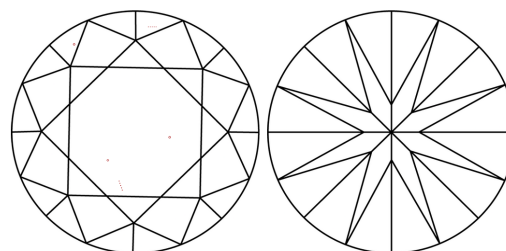
Comments: HEARTS & ARROWS
This Laboratory Grown Diamond was created by Chemical Vapor Deposition (CVD) growth process. Type IIa

PROPORTIONS



Sample Image Used

CLARITY CHARACTERISTICS



KEY TO SYMBOLS

Red symbols indicate internal characteristics.
Green symbols indicate external characteristics.

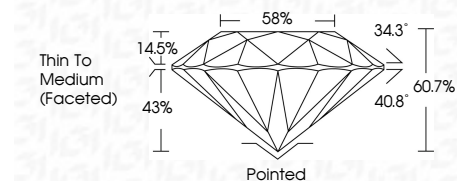


COLOR

D E F G H I J Faint Very Light Light

CLARITY

FL IF VVS 1-2 VS 1-2 SI 1-2 I 1-3
Flawless Internally Flawless Very Very Slightly Included Very Slightly Included Slightly Included Included



ADDITIONAL GRADING INFORMATION

Polish EXCELLENT
Symmetry EXCELLENT
Fluorescence NONE
Inscription(s) LG752575277
Comments: HEARTS & ARROWS
This Laboratory Grown Diamond was created by Chemical Vapor Deposition (CVD) growth process. Type IIa



Vertical summary of report details including date, report number, measurements, grading results, and additional information.