



**ELECTRONIC COPY**

LG752568329  
Report verification at igi.org



November 30, 2025

IGI Report Number **LG752568329**

Description **LABORATORY GROWN DIAMOND**

Shape and Cutting Style **CUT CORNERED  
RECTANGULAR MODIFIED  
BRILLIANT**

Measurements **10.23 X 7.02 X 4.82 MM**

**GRADING RESULTS**

Carat Weight **3.03 CARATS**

Color Grade **F**

Clarity Grade **VS 2**

November 30, 2025  
IGI Report Number **LG752568329**  
Description **LABORATORY GROWN DIAMOND**  
Shape and Cutting Style **CUT CORNERED RECTANGULAR  
MODIFIED BRILLIANT**  
Measurements **10.23 X 7.02 X 4.82 MM**

**GRADING RESULTS**

Carat Weight **3.03 CARATS**

Color Grade **F**

Clarity Grade **VS 2**

**ADDITIONAL GRADING INFORMATION**

Polish **EXCELLENT**

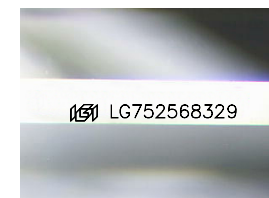
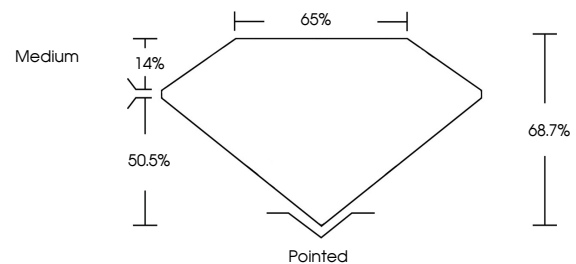
Symmetry **EXCELLENT**

Fluorescence **NONE**

Inscription(s) **IGI LG752568329**

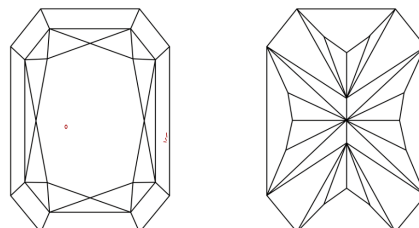
Comments: This Laboratory Grown Diamond was created by Chemical Vapor Deposition (CVD) growth process.  
Type IIa

**PROPORTIONS**



Sample Image Used

**CLARITY CHARACTERISTICS**



**KEY TO SYMBOLS**

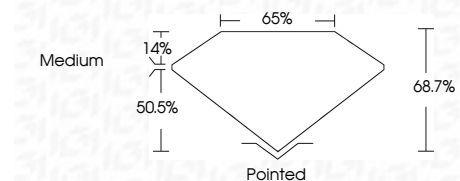
Red symbols indicate internal characteristics.  
Green symbols indicate external characteristics.

**COLOR**

D E F G H I J Faint Very Light Light

**CLARITY**

FL	IF	VS <sup>1-2</sup>	VS <sup>1-2</sup>	SI <sup>1-2</sup>	I <sup>1-3</sup>
Flawless	Internally Flawless	Very Very Slightly Included	Very Slightly Included	Slightly Included	Included



**ADDITIONAL GRADING INFORMATION**

Polish **EXCELLENT**

Symmetry **EXCELLENT**

Fluorescence **NONE**

Inscription(s) **IGI LG752568329**

Comments: This Laboratory Grown Diamond was created by Chemical Vapor Deposition (CVD) growth process.  
Type IIa



**IGI**



November 30, 2025  
IGI Report No LG752568329  
CUT CORNERED RECT. MODIFIED BRILLIANT  
10.23 X 7.02 X 4.82 MM  
3.03 CARATS  
F  
Color Grade  
VS 2  
68.7%  
50.5%  
Medium  
Pointed  
EXCELLENT  
EXCELLENT  
NONE  
IGI LG752568329  
Comments: This Laboratory Grown Diamond was created by Chemical Vapor Deposition (CVD) growth process.  
Type IIa