



November 28, 2025

IGI Report Number LG752567901
ROUND BRILLIANT
LABORATORY GROWN DIAMOND
4.06 - 4.09 X 2.54 MM

Carat Weight 0.26 CARAT
Color Grade D
Clarity Grade I.F.
Cut Grade IDEAL
Polish EXCELLENT
Symmetry EXCELLENT
Fluorescence NONE
Inscription(s) IGI LG752567901

Comments: This Laboratory Grown Diamond was created by Chemical Vapor Deposition (CVD) growth process. Type IIa

LABORATORY GROWN DIAMOND REPORT

November 28, 2025
IGI Report Number **LG752567901**
Description **LABORATORY GROWN DIAMOND**
Shape and Cutting Style **ROUND BRILLIANT**
Measurements **4.06 - 4.09 X 2.54 MM**

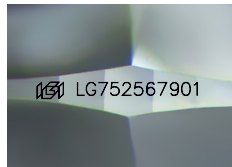
GRADING RESULTS

Carat Weight 0.26 CARAT
Color Grade D
Clarity Grade INTERNALLY FLAWLESS
Cut Grade IDEAL

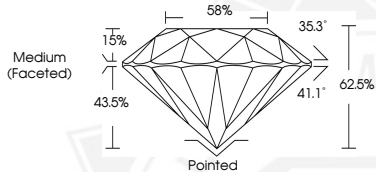
ADDITIONAL GRADING INFORMATION

Polish EXCELLENT
Symmetry EXCELLENT
Fluorescence NONE
Inscription(s) IGI LG752567901

Comments: This Laboratory Grown Diamond was created by Chemical Vapor Deposition (CVD) growth process. Type IIa



Sample Image Used



November 28, 2025

IGI Report Number LG752567901
ROUND BRILLIANT
LABORATORY GROWN DIAMOND
4.06 - 4.09 X 2.54 MM

Carat Weight 0.26 CARAT
Color Grade D
Clarity Grade I.F.
Cut Grade IDEAL
Polish EXCELLENT
Symmetry EXCELLENT
Fluorescence NONE
Inscription(s) IGI LG752567901

Comments: This Laboratory Grown Diamond was created by Chemical Vapor Deposition (CVD) growth process. Type IIa



THIS DOCUMENT WAS PRODUCED WITH THE FOLLOWING SECURITY MEASURES: SPECIAL DOCUMENT PAPER, INK SCREENS, WATERMARK, BACKGROUND DESIGNS, HOLOGRAM AND OTHER SECURITY FEATURES NOT LISTED AND DO EXCEED DOCUMENT SECURITY INDUSTRY GUIDELINES.