



**ELECTRONIC COPY**

## LABORATORY GROWN DIAMOND REPORT

|                         |                          |
|-------------------------|--------------------------|
| December 1, 2025        |                          |
| IGI Report Number       | LG752562285              |
| Description             | LABORATORY GROWN DIAMOND |
| Shape and Cutting Style | EMERALD CUT              |
| Measurements            | 9.90 X 6.95 X 4.66 MM    |

## GRADING RESULTS

|               |             |
|---------------|-------------|
| Carat Weight  | 3.10 CARATS |
| Color Grade   | F           |
| Clarity Grade | VS 2        |

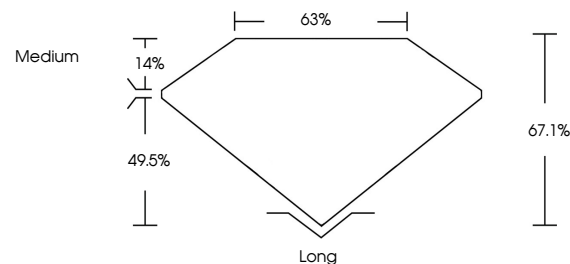
### ADDITIONAL GRADING INFORMATION

|                |                                                                                               |
|----------------|-----------------------------------------------------------------------------------------------|
| Polish         | EXCELLENT                                                                                     |
| Symmetry       | EXCELLENT                                                                                     |
| Fluorescence   | NONE                                                                                          |
| Inscription(s) |  LG752562285 |

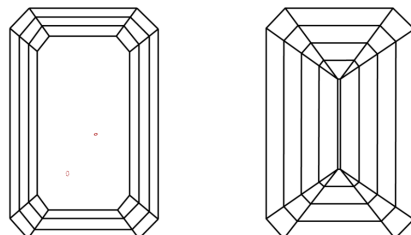
Comments: This Laboratory Grown Diamond was created by Chemical Vapor Deposition (CVD) growth process.  
Type IIa

LG752562285  
Report verification at [igi.org](https://igi.org)

## PROPORTIONS

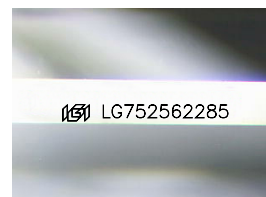


## CLARITY CHARACTERISTICS



## KEY TO SYMBOLS

Red symbols indicate internal characteristics.  
Green symbols indicate external characteristics.



Sample Image Used

**COLOR**

D E F G H I J Faint Very Light Light

## CLARITY

| FL       | IF                  | VVS <sup>1-2</sup>          | VS <sup>1-2</sup>      | SI <sup>1-2</sup> | I <sup>1-3</sup> |
|----------|---------------------|-----------------------------|------------------------|-------------------|------------------|
| Flawless | Internally Flawless | Very Very Slightly Included | Very Slightly Included | Slightly Included | Included         |

## LABORATORY GROWN DIAMOND REPORT



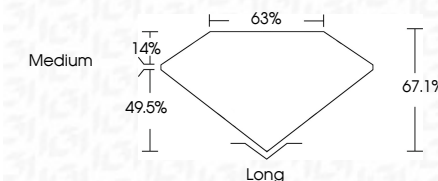
|                         |                          |
|-------------------------|--------------------------|
| December 1, 2025        |                          |
| IGI Report Number       | LG752562285              |
| Description             | LABORATORY GROWN DIAMOND |
| Shape and Cutting Style | EMERALD CUT              |
| Measurements            | 9.90 X 6.95 X 4.66 MM    |

## GRADING RESULTS

|               |             |
|---------------|-------------|
| Carat Weight  | 3.10 CARATS |
| Color Grade   | F           |
| Clarity Grade | VS 2        |

### ADDITIONAL GRADING INFORMATION

|                                                                                                                               |                                                                                                  |
|-------------------------------------------------------------------------------------------------------------------------------|--------------------------------------------------------------------------------------------------|
| Polish                                                                                                                        | EXCELLENT                                                                                        |
| Symmetry                                                                                                                      | EXCELLENT                                                                                        |
| Fluorescence                                                                                                                  | NONE                                                                                             |
| Inscription(s)                                                                                                                |  LG752562285 |
| <p>Comments: This Laboratory Grown Diamond was created by Chemical Vapor Deposition (CVD) growth process.</p> <p>Type IIa</p> |                                                                                                  |



© IGI 2020, International Gemological Institute

FD - 10 20



THIS DOCUMENT WAS PRODUCED WITH THE FOLLOWING SECURITY MEASURES: SPECIAL DOCUMENT PAPER, INK SCREENS, WATERMARK, BACKGROUND DESIGNS, HOLOGRAM AND OTHER SECURITY FEATURES NOT LISTED AND DO EXCEED DOCUMENT SECURITY INDUSTRY GUIDELINES

December 1, 2025  
 IGI Report No LG752562285  
 EVERAID CIT

|                       |                 |             |
|-----------------------|-----------------|-------------|
| 9.90 X 6.96 X 4.66 MM | Color Weight    | 3.10 CARATS |
| Color Grade           | F               |             |
| Clarity Grade         | VS 2            |             |
| Depth                 | 67.1%           |             |
| Table                 | 68%             |             |
| Girdle                | Medium          |             |
| Culet                 | Long            |             |
| Polish                | EXCELLENT       |             |
| Symmetry              | EXCELLENT       |             |
| Fluorescence          | NONE            |             |
| Measurements (mm)     | See Certificate |             |

**Comments:**  
This Laboratory Grown Diamond was created by Chemical Vapor Deposition (CVD) growth process.

**www.igi.org**