



**ELECTRONIC COPY**

## LABORATORY GROWN DIAMOND REPORT

LG752560261  
Report verification at [igi.org](https://igi.org)

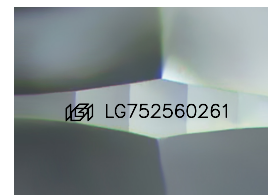
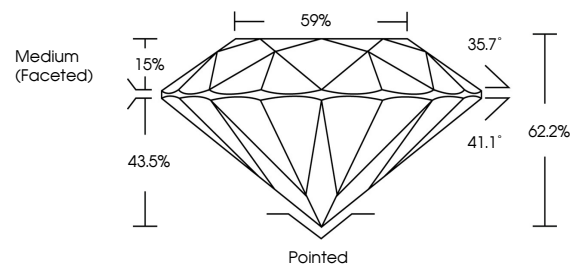
December 18, 2025	
IGI Report Number	LG752560261
Description	LABORATORY GROWN DIAMOND
Shape and Cutting Style	ROUND BRILLIANT
Measurements	8.04 - 8.07 X 5.01 MM
GRADING RESULTS	
Carat Weight	2.00 CARATS
Color Grade	D
Clarity Grade	VVS 2
Cut Grade	IDEAL

### ADDITIONAL GRADING INFORMATION

Polish	EXCELLENT
Symmetry	EXCELLENT
Fluorescence	NONE
Inscription(s)	15 LG752560261

Comments: This Laboratory Grown Diamond was created by Chemical Vapor Deposition (CVD) growth process.  
Type IIa

## PROPORTIONS



Sample Image Used

## COLOR

D E F G H I J Faint Very Light Light

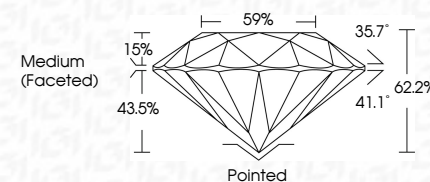
## CLARITY

FL	IF	VVS <sup>1-2</sup>	VS <sup>1-2</sup>	SI <sup>1-2</sup>	I <sup>1-3</sup>
Flawless	Internally Flawless	Very Very Slightly Included	Very Slightly Included	Slightly Included	Included

## LABORATORY GROWN DIAMOND REPORT



December 18, 2025	
IGI Report Number	LG752560261
Description	LABORATORY GROWN DIAMOND
Shape and Cutting Style	ROUND BRILLIANT
Measurements	8.04 - 8.07 X 5.01 MM
GRADING RESULTS	
Carat Weight	2.00 CARATS
Color Grade	D
Clarity Grade	VVS 2
Cut Grade	IDEAL



### ADDITIONAL GRADING INFORMATION

Polish	EXCELLENT
Symmetry	EXCELLENT
Fluorescence	NONE
Inscription(s)	 LG752560261
<p>Comments: This Laboratory Grown Diamond was created by Chemical Vapor Deposition (CVD) growth process.</p> <p>Type IIa</p>	



© IGI 2020, International Gemological Institute

FD - 10 20



THIS DOCUMENT WAS PRODUCED WITH THE FOLLOWING SECURITY MEASURES: SPECIAL DOCUMENT PAPER, INK SCREENS, WATERMARK, BACKGROUND DESIGNS, HOLOGRAM AND OTHER SECURITY FEATURES NOT LISTED AND DO EXCEED DOCUMENT SECURITY INDUSTRY GUIDELINES

**www.igi.org**

December 18, 2025  
 IGI Report No LG752560261  
 ROUND BRILLIANT

ROUND BRILLIANT  
8.04 - 8.07 X 5.01 MM

3.04 - 8.07 X 5.01 MM  
Carat Weight 2.00 CARATS

Color Grade	D
-------------	---

Clarity Grade	WS2
FL	
IF	
VS1	
VVS1	
VVS2	
VS2	
SI1	
SI2	
I1	
I2	
I3	

Cut Grade	IDEAL
Depth	62.2%

Depth	62.2%
Table	59%

Girdle Medium (Faceted)

Culet	Pointed
-------	---------

Culet	Pointed
Polish	EXCELLENT

Symmetry	EXCELLENT
Glaze	NONE

Fluorescence	NONE
Inscription(s)	151 LG752560261

15/11/2017 15:20:00

**Comments:**  
This Laboratory Grown Diamond was  
certified by Chemical Vapor Deposition

created by Chemical Vapor Deposition (CVD) growth process.

Type IIa