



ELECTRONIC COPY

LG752558556
Report verification at igi.org



December 16, 2025

IGI Report Number **LG752558556**

Description **LABORATORY GROWN DIAMOND**

Shape and Cutting Style **EMERALD CUT**

Measurements **14.54 X 9.98 X 6.43 MM**

GRADING RESULTS

Carat Weight **9.09 CARATS**

Color Grade **F**

Clarity Grade **VS 1**

December 16, 2025
IGI Report Number **LG752558556**
Description **LABORATORY GROWN DIAMOND**
Shape and Cutting Style **EMERALD CUT**
Measurements **14.54 X 9.98 X 6.43 MM**

GRADING RESULTS

Carat Weight **9.09 CARATS**

Color Grade **F**

Clarity Grade **VS 1**

ADDITIONAL GRADING INFORMATION

Polish **EXCELLENT**

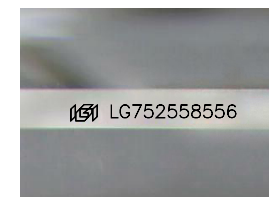
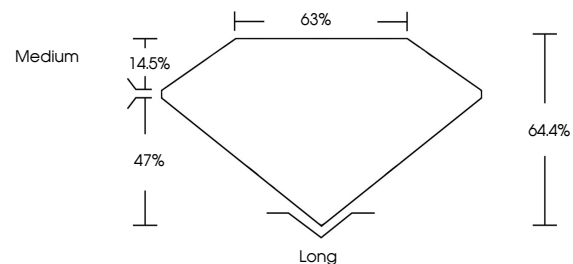
Symmetry **EXCELLENT**

Fluorescence **NONE**

Inscription(s) **LG752558556**

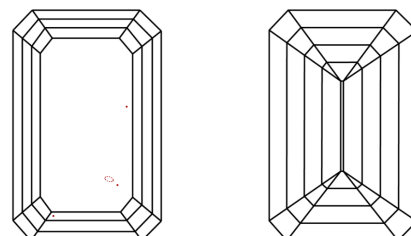
Comments: This Laboratory Grown Diamond was created by Chemical Vapor Deposition (CVD) growth process. Type IIa

PROPORTIONS



Sample Image Used

CLARITY CHARACTERISTICS



KEY TO SYMBOLS

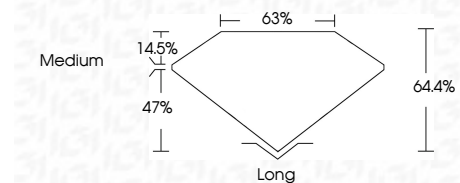
Red symbols indicate internal characteristics.
Green symbols indicate external characteristics.

COLOR

D E F G H I J Faint Very Light Light

CLARITY

| FL | IF | VS ¹⁻² | VS ¹⁻² | SI ¹⁻² | I ¹⁻³ |
|----------|---------------------|-----------------------------|------------------------|-------------------|------------------|
| Flawless | Internally Flawless | Very Very Slightly Included | Very Slightly Included | Slightly Included | Included |



ADDITIONAL GRADING INFORMATION

Polish **EXCELLENT**

Symmetry **EXCELLENT**

Fluorescence **NONE**

Inscription(s) **LG752558556**

Comments: This Laboratory Grown Diamond was created by Chemical Vapor Deposition (CVD) growth process. Type IIa



IGI



December 16, 2025
IGI Report No LG752558556
EMERALD CUT
14.54 X 9.98 X 6.43 MM
9.09 CARATS
F
Color Grade
VS 1
Clarity Grade
64.4%
Depth
63%
Table
Medium
Grades
Long
Culet
EXCELLENT
Polish
EXCELLENT
Symmetry
NONE
Fluorescence
Inscription(s)
 LG752558556
Comments: This Laboratory Grown Diamond was created by Chemical Vapor Deposition (CVD) growth process. Type IIa