



**ELECTRONIC COPY**

## LABORATORY GROWN DIAMOND REPORT

|                         |                          |
|-------------------------|--------------------------|
| December 15, 2025       |                          |
| IGI Report Number       | LG752557889              |
| Description             | LABORATORY GROWN DIAMOND |
| Shape and Cutting Style | EMERALD CUT              |
| Measurements            | 8.69 X 6.03 X 3.95 MM    |

## GRADING RESULTS

|               |             |
|---------------|-------------|
| Carat Weight  | 2.03 CARATS |
| Color Grade   | F           |
| Clarity Grade | VVS 2       |

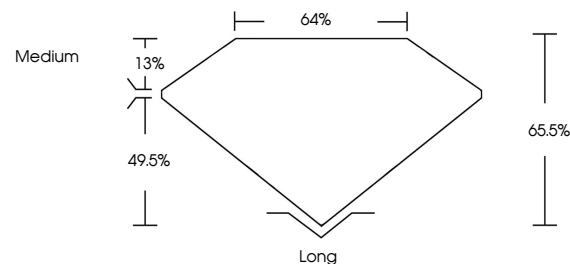
### ADDITIONAL GRADING INFORMATION

|                |                |
|----------------|----------------|
| Polish         | EXCELLENT      |
| Symmetry       | EXCELLENT      |
| Fluorescence   | NONE           |
| Inscription(s) | 15 LG752557889 |

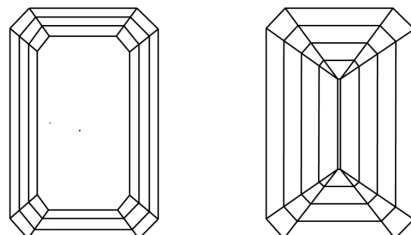
Comments: This Laboratory Grown Diamond was created by Chemical Vapor Deposition (CVD) growth process.  
Type IIa

LG752557889  
Report verification at [lgi.org](https://lgi.org)

## PROPORTIONS

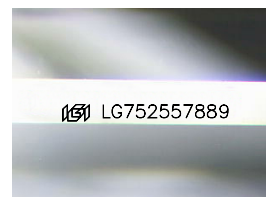


## CLARITY CHARACTERISTICS



### KEY TO SYMBOLS

Red symbols indicate internal characteristics.  
Green symbols indicate external characteristics.



Sample Image Used

## COLOR

D E F G H I J Faint Very Light Light

## CLARITY

| FL       | IF                  | VVS <sup>1-2</sup>          | VS <sup>1-2</sup>      | SI <sup>1-2</sup> | I <sup>1-3</sup> |
|----------|---------------------|-----------------------------|------------------------|-------------------|------------------|
| Flawless | Internally Flawless | Very Very Slightly Included | Very Slightly Included | Slightly Included | Included         |

## LABORATORY GROWN DIAMOND REPORT



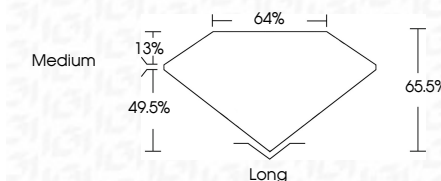
|                         |                          |
|-------------------------|--------------------------|
| December 15, 2025       |                          |
| IGI Report Number       | LG752557889              |
| Description             | LABORATORY GROWN DIAMOND |
| Shape and Cutting Style | EMERALD CUT              |
| Measurements            | 8.69 X 6.03 X 3.95 MM    |

## GRADING RESULTS

|               |             |
|---------------|-------------|
| Carat Weight  | 2.03 CARATS |
| Color Grade   | F           |
| Clarity Grade | VVS 2       |

### ADDITIONAL GRADING INFORMATION

|   |   |
|---|---|
| Polish  | EXCELLENT   |
| Symmetry  | EXCELLENT   |
| Fluorescence  | NONE  |
| Inscription(s)  |  LG752557889 |
| <p>Comments: This Laboratory Grown Diamond was created by Chemical Vapor Deposition (CVD) growth process.</p> <p>Type IIa</p> |   |



December 15, 2025  
 LGI Report No LG752557889

|                       |             |
|-----------------------|-------------|
| 3.49 X 6.03 X 3.95 MM | 2.03 CARATS |
| Carat Weight          | VVS 2       |
| Color Grade           | 65.0%       |
| Clarity Grade         | 64%         |
| Cut                   | Medium      |
| Polish                | Long        |
| Symmetry              | EXCELLENT   |
| Fluorescence          | EXCELLENT   |
|                       | NONE        |

**Comments:**  
This Laboratory Grown Diamond was  
created by Chemical Vapor Deposition  
(CVD) growth process.

© IGI 2020, International Gemological Institute

FD - 10 20



THIS DOCUMENT WAS PRODUCED WITH THE FOLLOWING SECURITY MEASURES: SPECIAL DOCUMENT PAPER, INK SCREENS, WATERMARK, BACKGROUND DESIGNS, HOLOGRAM AND OTHER SECURITY FEATURES NOT LISTED AND DO EXCEED DOCUMENT SECURITY INDUSTRY GUIDELINE



**www.igi.org**