



ELECTRONIC COPY

LG752557610
Report verification at igi.org



December 15, 2025

IGI Report Number **LG752557610**

Description **LABORATORY GROWN DIAMOND**

Shape and Cutting Style **SQUARE EMERALD CUT**

Measurements **7.86 X 7.85 X 5.33 MM**

GRADING RESULTS

Carat Weight **3.03 CARATS**

Color Grade **FANCY BROWN**

Clarity Grade **VVS 2**

December 15, 2025
IGI Report Number **LG752557610**
Description **LABORATORY GROWN DIAMOND**
Shape and Cutting Style **SQUARE EMERALD CUT**
Measurements **7.86 X 7.85 X 5.33 MM**

GRADING RESULTS

Carat Weight **3.03 CARATS**

Color Grade **FANCY BROWN**

Clarity Grade **VVS 2**

ADDITIONAL GRADING INFORMATION

Polish **EXCELLENT**

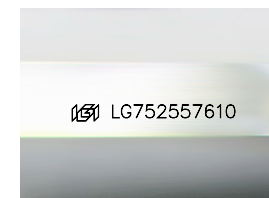
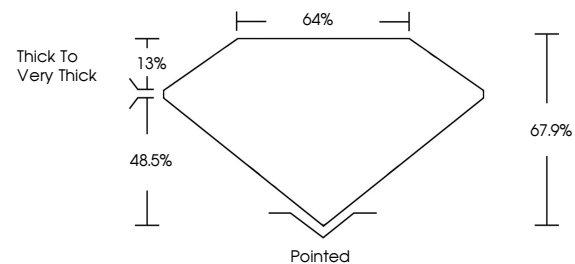
Symmetry **EXCELLENT**

Fluorescence **NONE**

Inscription(s) **IGI LG752557610**

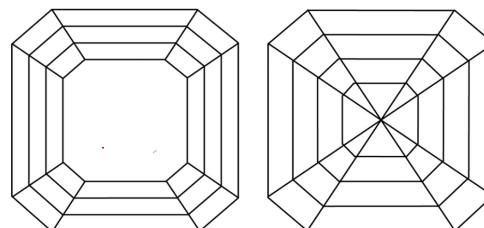
Comments: This Laboratory Grown Diamond was created by Chemical Vapor Deposition (CVD) growth process.
Indications of post-growth treatment.

PROPORTIONS



Sample Image Used

CLARITY CHARACTERISTICS



KEY TO SYMBOLS

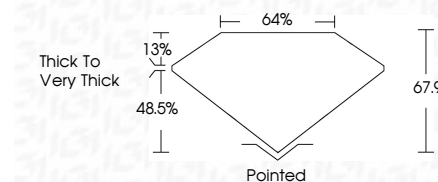
Red symbols indicate internal characteristics.
Green symbols indicate external characteristics.

COLOR

D E F G H I J Faint Very Light Light

CLARITY

FL	IF	VVS ¹⁻²	VS ¹⁻²	SI ¹⁻²	I ¹⁻³
Flawless	Internally Flawless	Very Very Slightly Included	Very Slightly Included	Slightly Included	Included



ADDITIONAL GRADING INFORMATION

Polish **EXCELLENT**

Symmetry **EXCELLENT**

Fluorescence **NONE**

Inscription(s) **IGI LG752557610**

Comments: This Laboratory Grown Diamond was created by Chemical Vapor Deposition (CVD) growth process.
Indications of post-growth treatment.



IGI



December 15, 2025
IGI Report No LG752557610
SQUARE EMERALD CUT
3.03 CARATS
FANCY BROWN
VVS 2
67.9%
48.5%
13%
64%
Pointed
EXCELLENT
EXCELLENT
NONE
IGI LG752557610

Comments: This Laboratory Grown Diamond was created by Chemical Vapor Deposition (CVD) growth process.
Indications of post-growth treatment.