



**ELECTRONIC COPY**

## LABORATORY GROWN DIAMOND REPORT

LG752556646  
Report verification at [igi.org](https://igi.org)

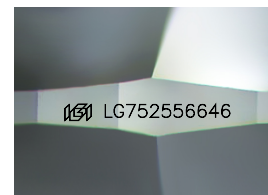
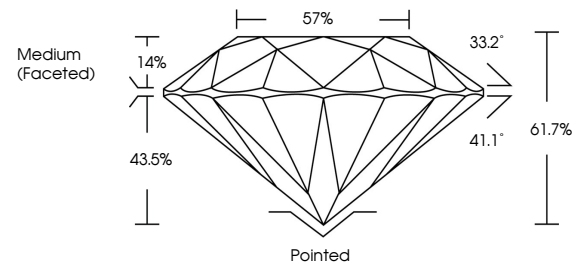
|                         |                          |
|-------------------------|--------------------------|
| December 11, 2025       |                          |
| IGI Report Number       | LG752556646              |
| Description             | LABORATORY GROWN DIAMOND |
| Shape and Cutting Style | ROUND BRILLIANT          |
| Measurements            | 8.17 - 8.23 X 5.06 MM    |
| GRADING RESULTS         |                          |
| Carat Weight            | 2.09 CARATS              |
| Color Grade             | E                        |
| Clarity Grade           | VVS 2                    |
| Cut Grade               | IDEAL                    |

### ADDITIONAL GRADING INFORMATION

|                |                                                                                                 |
|----------------|-------------------------------------------------------------------------------------------------|
| Polish         | EXCELLENT                                                                                       |
| Symmetry       | EXCELLENT                                                                                       |
| Fluorescence   | NONE                                                                                            |
| Inscription(s) |  LG752556646 |

Comments: This Laboratory Grown Diamond was created by Chemical Vapor Deposition (CVD) growth process.  
Type IIa

## PROPORTIONS



Sample Image Used

## COLOR

D E F G H I J Faint Very Light Light

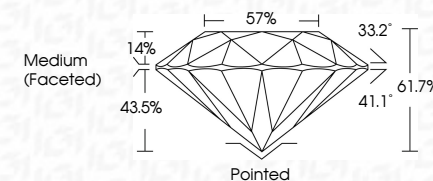
## CLARITY

| FL       | IF                  | VVS <sup>1-2</sup>          | VS <sup>1-2</sup>      | SI <sup>1-2</sup> | I <sup>1-3</sup> |
|----------|---------------------|-----------------------------|------------------------|-------------------|------------------|
| Flawless | Internally Flawless | Very Very Slightly Included | Very Slightly Included | Slightly Included | Included         |

## LABORATORY GROWN DIAMOND REPORT



|                         |                          |
|-------------------------|--------------------------|
| December 11, 2025       |                          |
| IGI Report Number       | LG752556646              |
| Description             | LABORATORY GROWN DIAMOND |
| Shape and Cutting Style | ROUND BRILLIANT          |
| Measurements            | 8.17 - 8.23 X 5.06 MM    |
| GRADING RESULTS         |                          |
| Carat Weight            | 2.09 CARATS              |
| Color Grade             | E                        |
| Clarity Grade           | VVS 2                    |
| Cut Grade               | IDEAL                    |



### ADDITIONAL GRADING INFORMATION

|                                                                                                                               |                                                                                                 |
|-------------------------------------------------------------------------------------------------------------------------------|-------------------------------------------------------------------------------------------------|
| Polish                                                                                                                        | EXCELLENT                                                                                       |
| Symmetry                                                                                                                      | EXCELLENT                                                                                       |
| Fluorescence                                                                                                                  | NONE                                                                                            |
| Inscription(s)                                                                                                                |  LG752556646 |
| <p>Comments: This Laboratory Grown Diamond was created by Chemical Vapor Deposition (CVD) growth process.</p> <p>Type IIa</p> |                                                                                                 |



© IGI 2020, International Gemological Institute

FD - 10 20



THIS DOCUMENT WAS PRODUCED WITH THE FOLLOWING SECURITY MEASURES: SPECIAL DOCUMENT PAPER, INK SCREENS, WATERMARK, BACKGROUND DESIGNS, HOLOGRAM, AND OTHER SECURITY FEATURES NOT LISTED AND DO EXCEED DOCUMENT SECURITY INDUSTRY GUIDELINES.

**www.igi.org**

December 11, 2025  
 IGI Report No LG752556646  
 ROUND BRILLIANT

|                 |                       |             |   |               |           |       |                  |         |           |           |          |              |
|-----------------|-----------------------|-------------|---|---------------|-----------|-------|------------------|---------|-----------|-----------|----------|--------------|
| ROUND BRILLIANT | 3.17 - 8.23 X 5.06 MM | 2.09 CARATS | E | VVS 2         | 61.7%     | 57%   | Medium (faceted) | Pointed | EXCELLENT | EXCELLENT | NONE     |              |
|                 | Carat Weight          |             |   | Clarity Grade | Cut Grade | Depth | Table            | Girdle  | Culet     | Polish    | Symmetry | Fluorescence |

**Comments:**  
This Laboratory Grown Diamond was created by Chemical Vapor Deposition (CVD) growth process.