



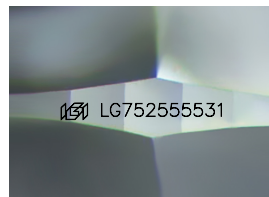
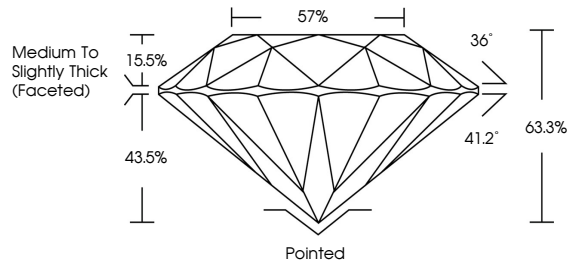
**INTERNATIONAL
GEMOLOGICAL
INSTITUTE**

ELECTRONIC COPY

LABORATORY GROWN DIAMOND REPORT

LG75255531
Report verification at [igi.org](https://www.igi.org)

PROPORTIONS



Sample Image Used

COLOR

D E F G H I J Faint Very Light Light

CLARITY

| FL | IF | VVS ¹⁻² | VS ¹⁻² | SI ¹⁻² | I ¹⁻³ |
|----------|---------------------|-----------------------------|------------------------|-------------------|------------------|
| Flawless | Internally Flawless | Very Very Slightly Included | Very Slightly Included | Slightly Included | Included |



December 12, 2025

IGI Report Number **LG75255531**

| | |
|-------------|--------------------------|
| Description | LABORATORY GROWN DIAMOND |
|-------------|--------------------------|

Shape and Cutting Style **ROUND BRILLIANT**

| | |
|--------------|-----------------------|
| Measurements | 7.96 - 8.00 X 5.05 MM |
|--------------|-----------------------|

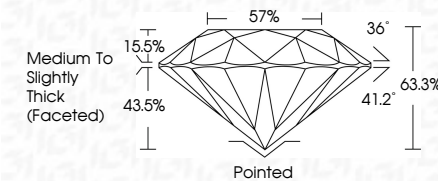
GRADING RESULTS

Carat Weight **2.00 CARATS**

| | |
|-------------|---|
| Color Grade | F |
|-------------|---|

Clarity Grade **VVS 2**

Cut Grade **EXCELLENT**



ADDITIONAL GRADING INFORMATION

Polish **EXCELLENT**Symmetry **EXCELLENT**Fluorescence **NONE**Inscription(s)  LG752555531

Comments: This Laboratory Grown Diamond was created by Chemical Vapor Deposition (CVD) growth process.
Type IIa



IG



© IGI 2020, International Gemological Institute

FD - 10 20

www.igi.org

THIS DOCUMENT WAS PRODUCED WITH THE FOLLOWING SECURITY MEASURES: SPECIAL DOCUMENT PAPER, INK SCREENS, WATERMARK, BACKGROUND DESIGNS, HOLOGRAM AND OTHER SECURITY FEATURES NOT LISTED AND DO EXCEED DOCUMENT SECURITY INDUSTRY GUIDELINES

December 12, 2025
IGI Report No LG752555531
ROUND BRILLIANT

| | |
|-----------------------|------------------------------------|
| 7.96 - 8.00 X 6.05 MM | |
| Carat Weight | 2.00 CARATS |
| Color Grade | F |
| Clarity Grade | VVS 2 |
| Cut Grade | EXCELLENT |
| Depth | 63.3% |
| Table | 67% |
| Girdle | Medium to slightly Thick (faceted) |
| Culet | Pointed |
| Polish | EXCELLENT |
| Symmetry | EXCELLENT |
| Fluorescence | NONE |
| Incision(s) | 4411 (57.955563) |

Comments:
This Laboratory Grown Diamond was created by Chemical Vapor Deposition (CVD) growth process.