



ELECTRONIC COPY

LABORATORY GROWN DIAMOND REPORT

LG752555520
Report verification at igi.org

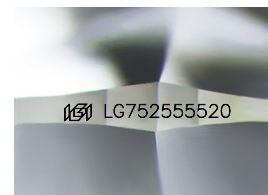
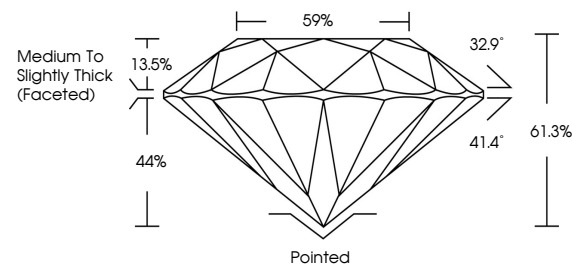
December 12, 2025	
IGI Report Number	LG752555520
Description	LABORATORY GROWN DIAMOND
Shape and Cutting Style	ROUND BRILLIANT
Measurements	8.05 - 8.10 X 4.96 MM
GRADING RESULTS	
Carat Weight	2.00 CARATS
Color Grade	E
Clarity Grade	VVS 2
Cut Grade	IDEAL

ADDITIONAL GRADING INFORMATION

Polish	EXCELLENT
Symmetry	EXCELLENT
Fluorescence	NONE
Inscription(s)	151 LG752555520

Comments: This Laboratory Grown Diamond was created by Chemical Vapor Deposition (CVD) growth process.
Type IIa

PROPORTIONS



Sample Image Used

COLOR

D E F G H I J Faint Very Light Light

CLARITY

FL	IF	VVS ¹⁻²	VS ¹⁻²	SI ¹⁻²	I ¹⁻³
Flawless	Internally Flawless	Very Very Slightly Included	Very Slightly Included	Slightly Included	Included

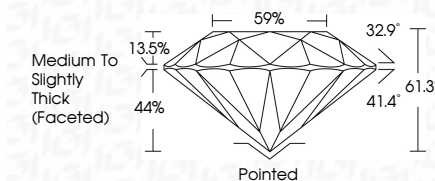
LABORATORY GROWN DIAMOND REPORT



December 12, 2025	
IGI Report Number	LG752555520
Description	LABORATORY GROWN DIAMOND
Shape and Cutting Style	ROUND BRILLIANT
Measurements	8.05 - 8.10 X 4.96 MM
GRADING RESULTS	
Carat Weight	2.00 CARATS
Color Grade	E
Clarity Grade	VVS 2
Cut Grade	IDEAL

ADDITIONAL GRADING INFORMATION

Polish	EXCELLENT
Symmetry	EXCELLENT
Fluorescence	NONE
Inscription(s)	163 LG752555520
Comments: This Laboratory Grown Diamond was created by Chemical Vapor Deposition (CVD) growth process.	
Type IIa	



© IGI 2020, International Gemological Institute

FD - 10 20



THIS DOCUMENT WAS PRODUCED WITH THE FOLLOWING SECURITY MEASURES: SPECIAL DOCUMENT PAPER, INK SCREENS, WATERMARK, BACKGROUND DESIGNS, HOLOGRAM AND OTHER SECURITY FEATURES NOT LISTED AND DO EXCEED DOCUMENT SECURITY INDUSTRY GUIDELINES

www.igi.org

December 12, 2025
IGI Report No LG752555520
ROUND BRILLIANT

ROUND BRILLIANT	9.05 - 8.10 X 4.95 MM		Carat Weight	2.00 CARATS
	Color Grade		E	
	Clarity Grade		VS 2	
	Cut Grade		IDEAL	
	Depth		61.8%	
	Table		59%	
	Girdle		Medium To Slightly Thick (Faceted)	
	Culet		Pointed	
	Polish		EXCELLENT	
	Symmetry		EXCELLENT	
Fluorescence		NONE		

Comments:
This Laboratory Grown Diamond was created by Chemical Vapor Deposition (CVD) growth process.