



**ELECTRONIC COPY**

LG752555445  
Report verification at igi.org



December 11, 2025  
IGI Report Number **LG752555445**  
Description **LABORATORY GROWN DIAMOND**  
Shape and Cutting Style **EMERALD CUT**  
Measurements **11.38 X 7.97 X 5.11 MM**  
**GRADING RESULTS**  
Carat Weight **4.60 CARATS**  
Color Grade **G**  
Clarity Grade **VVS 2**

December 11, 2025  
IGI Report Number **LG752555445**  
Description **LABORATORY GROWN DIAMOND**  
Shape and Cutting Style **EMERALD CUT**  
Measurements **11.38 X 7.97 X 5.11 MM**

**GRADING RESULTS**

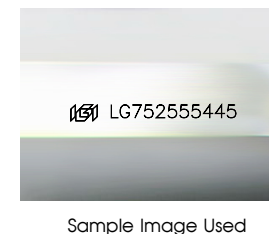
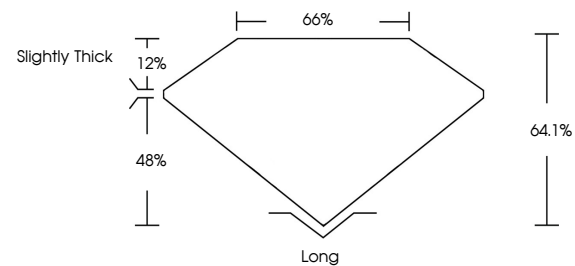
Carat Weight **4.60 CARATS**  
Color Grade **G**  
Clarity Grade **VVS 2**

**ADDITIONAL GRADING INFORMATION**

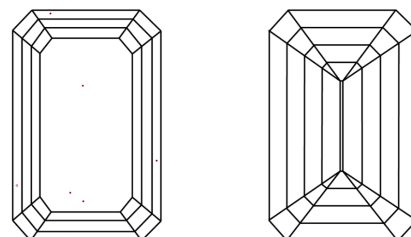
Polish **EXCELLENT**  
Symmetry **EXCELLENT**  
Fluorescence **NONE**  
Inscription(s) **IGI LG752555445**

Comments: This Laboratory Grown Diamond was created by Chemical Vapor Deposition (CVD) growth process. Type IIa

**PROPORTIONS**



**CLARITY CHARACTERISTICS**



**KEY TO SYMBOLS**

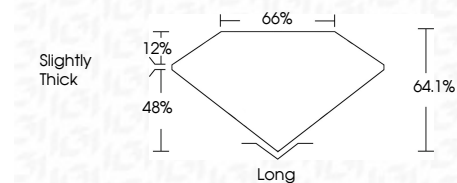
Red symbols indicate internal characteristics.  
Green symbols indicate external characteristics.

**COLOR**

D E F G H I J Faint Very Light Light

**CLARITY**

FL	IF	VVS <sup>1-2</sup>	VS <sup>1-2</sup>	SI <sup>1-2</sup>	I <sup>1-3</sup>
Flawless	Internally Flawless	Very Very Slightly Included	Very Slightly Included	Slightly Included	Included



**ADDITIONAL GRADING INFORMATION**

Polish **EXCELLENT**  
Symmetry **EXCELLENT**  
Fluorescence **NONE**  
Inscription(s) **IGI LG752555445**  
Comments: This Laboratory Grown Diamond was created by Chemical Vapor Deposition (CVD) growth process. Type IIa



December 11, 2025  
IGI Report No LG752555445  
**EMERALD CUT**  
11.38 X 7.97 X 5.11 MM  
4.60 CARATS  
G  
VVS 2  
64.1%  
65%  
Slightly Thick  
Long  
EXCELLENT  
EXCELLENT  
NONE  
IGI LG752555445  
Comments: This Laboratory Grown Diamond was created by Chemical Vapor Deposition (CVD) growth process. Type IIa