



**ELECTRONIC COPY**

## LABORATORY GROWN DIAMOND REPORT

LG752554586  
Report verification at [igi.org](https://igi.org)

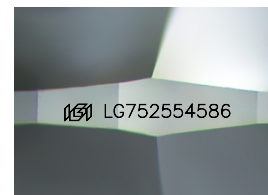
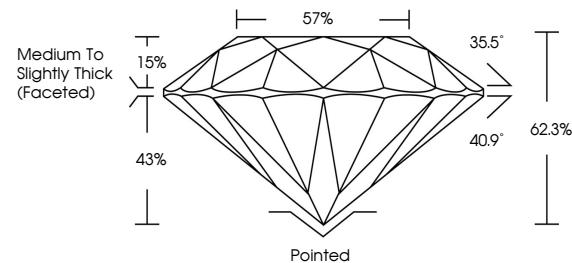
December 12, 2025	
IGI Report Number	LG752554586
Description	LABORATORY GROWN DIAMOND
Shape and Cutting Style	ROUND BRILLIANT
Measurements	9.17 - 9.22 X 5.72 MM
GRADING RESULTS	
Carat Weight	3.01 CARATS
Color Grade	D
Clarity Grade	VVS 1
Cut Grade	IDEAL

### ADDITIONAL GRADING INFORMATION

Polish	EXCELLENT
Symmetry	EXCELLENT
Fluorescence	NONE
Inscription(s)	 LG752554586

Comments: This Laboratory Grown Diamond was created by Chemical Vapor Deposition (CVD) growth process.  
Type IIa

## PROPORTIONS



Sample Image Used

**COLOR**

D E F G H I J Faint Very Light Light

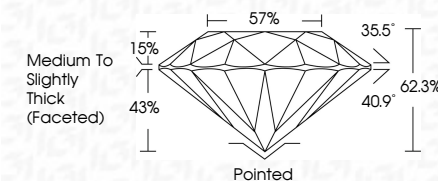
## CLARITY

FL	IF	VVS <sup>1-2</sup>	VS <sup>1-2</sup>	SI <sup>1-2</sup>	I <sup>1-3</sup>
Flawless	Internally Flawless	Very Very Slightly Included	Very Slightly Included	Slightly Included	Included

## LABORATORY GROWN DIAMOND REPORT



December 12, 2025	
IGI Report Number	LG752554586
Description	LABORATORY GROWN DIAMOND
Shape and Cutting Style	ROUND BRILLIANT
Measurements	9.17 - 9.22 X 5.72 MM
GRADING RESULTS	
Carat Weight	3.01 CARATS
Color Grade	D
Clarity Grade	VVS 1
Cut Grade	IDEAL



### ADDITIONAL GRADING INFORMATION

Polish	EXCELLENT
Symmetry	EXCELLENT
Fluorescence	NONE
Inscription(s)	 LG752554586
Comments: This Laboratory Grown Diamond was created by Chemical Vapor Deposition (CVD) growth process.	
Type IIa	



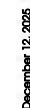
© IGI 2020, International Gemological Institute

FD - 10 20



THIS DOCUMENT WAS PRODUCED WITH THE FOLLOWING SECURITY MEASURES: SPECIAL DOCUMENT PAPER, INK SCREENS, WATERMARK, BACKGROUND DESIGNS, HOLOGRAM AND OTHER SECURITY FEATURES NOT LISTED AND DO EXCEED DOCUMENT SECURITY INDUSTRY GUIDELINES

**www.igi.org**



December 12, 2025  
GJ Report No | G752554586

Report No LG7525  
EXCIND BRILLIANT

2.17 - 9.22 X 5.72 MM  
Carat Weight 3.01 CARATS

Catal weight%	3.01 Catalyst
Color Grade	D

Clarity Grade	WS 1
Cut Grade	IDEAL

Can Erase	IDEAL
Depth	62.3%
Table	57%

able	Medium To Slightly Thick (Erect)	57%
Girdle		

	Culet	Pointed
Thick (Faceted)		

Polished	
EXCELLENT	
EXCELLENT	

Symmetry	EXCELLENT
Fluorescence	NONE

Inscription(s)	1991 LG752554586

**Comments:**  
This Laboratory Grown Diamond was  
certified by: Gemological Institute of America

Created by Chemical Vapor Deposition  
(CVD) growth process.  
Type IIa

type III