



ELECTRONIC COPY

LABORATORY GROWN DIAMOND REPORT

LG752553910
Report verification at igi.org

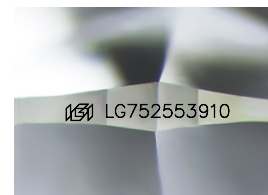
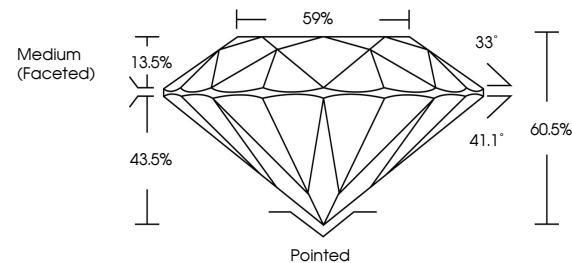
December 10, 2025	
IGI Report Number	LG752553910
Description	LABORATORY GROWN DIAMOND
Shape and Cutting Style	ROUND BRILLIANT
Measurements	8.15 - 8.21 X 4.94 MM
GRADING RESULTS	
Carat Weight	2.01 CARATS
Color Grade	D
Clarity Grade	VVS 1
Cut Grade	IDEAL

ADDITIONAL GRADING INFORMATION

Polish	EXCELLENT
Symmetry	EXCELLENT
Fluorescence	NONE
Inscription(s)	 LG752553910

Comments: This Laboratory Grown Diamond was created by Chemical Vapor Deposition (CVD) growth process.
Type IIa

PROPORTIONS



Sample Image Used

COLOR

D E F G H I J Faint Very Light Light

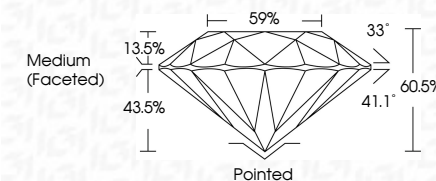
CLARITY

FL	IF	VVS ¹⁻²	VS ¹⁻²	SI ¹⁻²	I ¹⁻³
Flawless	Internally Flawless	Very Very Slightly Included	Very Slightly Included	Slightly Included	Included

LABORATORY GROWN DIAMOND REPORT



December 10, 2025	
IGI Report Number	LG752553910
Description	LABORATORY GROWN DIAMOND
Shape and Cutting Style	ROUND BRILLIANT
Measurements	8.15 - 8.21 X 4.94 MM
GRADING RESULTS	
Carat Weight	2.01 CARATS
Color Grade	D
Clarity Grade	VVS 1
Cut Grade	IDEAL



ADDITIONAL GRADING INFORMATION

Polish	EXCELLENT
Symmetry	EXCELLENT
Fluorescence	NONE
Inscription(s)	 LG752553910
<p>Comments: This Laboratory Grown Diamond was created by Chemical Vapor Deposition (CVD) growth process.</p> <p>Type IIa</p>	



© IGI 2020, International Gemological Institute

FD - 10 20



THIS DOCUMENT WAS PRODUCED WITH THE FOLLOWING SECURITY MEASURES: SPECIAL DOCUMENT PAPER, INK SCREENS, WATERMARK, BACKGROUND DESIGNS, HOLOGRAM AND OTHER SECURITY FEATURES NOT LISTED AND DO EXCEED DOCUMENT SECURITY INDUSTRY GUIDELINES

www.igi.org

December 10, 2025
IGI Report No LG752553910
ROUND BRILLIANT

	ROUND BRILLIANT	
	18.15 - 22.1 X 4.94 MM	
	Carat Weight	2.01 CARATS
	Color Grade	D
	Cutty Grade	VVS 1
	Clarity Grade	IDEAL
	Depth	60.6%
	Table	59%
	Girdle	Medium (Faceted)
	Culet	Poined
	Polish	EXCELLENT
	Symmetry	EXCELLENT
	Fluorescence	NONE
	Comments	See Certification

Comments:
This Laboratory Grown Diamond was created by Chemical Vapor Deposition (CVD) growth process.