



**ELECTRONIC COPY**

## LABORATORY GROWN DIAMOND REPORT

|                         |                          |
|-------------------------|--------------------------|
| December 10, 2025       |                          |
| IGI Report Number       | LG752553397              |
| Description             | LABORATORY GROWN DIAMOND |
| Shape and Cutting Style | ROUND BRILLIANT          |
| Measurements            | 8.80 - 8.83 X 5.34 MM    |
| GRADING RESULTS         |                          |
| Carat Weight            | 2.52 CARATS              |
| Color Grade             | E                        |
| Clarity Grade           | VVS 2                    |
| Cut Grade               | IDEAL                    |

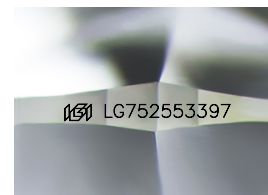
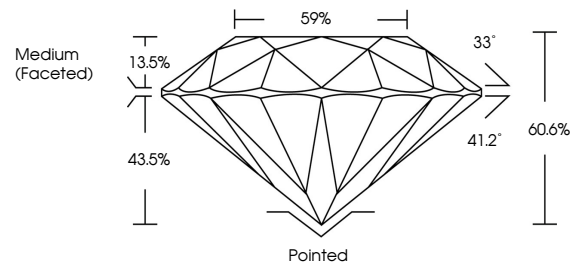
### ADDITIONAL GRADING INFORMATION

|                |   |
|----------------|---|
| Polish         | EXCELLENT   |
| Symmetry       | EXCELLENT   |
| Fluorescence   | NONE  |
| Inscription(s) |  LG752553397 |

Comments: This Laboratory Grown Diamond was created by Chemical Vapor Deposition (CVD) growth process.  
Type IIa

LG752553397  
Report verification at [igi.org](https://igi.org)

## PROPORTIONS



Sample Image Used

## COLOR

D E F G H I J Faint Very Light Light

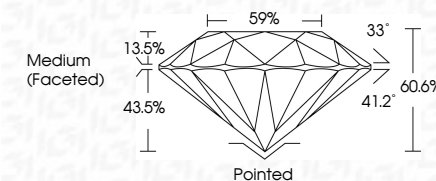
## CLARITY

| FL       | IF                  | VVS <sup>1-2</sup>          | VS <sup>1-2</sup>      | SI <sup>1-2</sup> | I <sup>1-3</sup> |
|----------|---------------------|-----------------------------|------------------------|-------------------|------------------|
| Flawless | Internally Flawless | Very Very Slightly Included | Very Slightly Included | Slightly Included | Included         |

## LABORATORY GROWN DIAMOND REPORT



|                         |                          |
|-------------------------|--------------------------|
| December 10, 2025       |                          |
| IGI Report Number       | LG752553397              |
| Description             | LABORATORY GROWN DIAMOND |
| Shape and Cutting Style | ROUND BRILLIANT          |
| Measurements            | 8.80 - 8.83 X 5.34 MM    |
| GRADING RESULTS         |                          |
| Carat Weight            | 2.52 CARATS              |
| Color Grade             | E                        |
| Clarity Grade           | VVS 2                    |
| Cut Grade               | IDEAL                    |



### ADDITIONAL GRADING INFORMATION

|   |   |
|---|---|
| Polish  | EXCELLENT   |
| Symmetry  | EXCELLENT   |
| Fluorescence  | NONE  |
| Inscription(s)  |  LG752553397 |
| <p>Comments: This Laboratory Grown Diamond was created by Chemical Vapor Deposition (CVD) growth process.</p> <p>Type IIa</p> |   |



© IGI 2020, International Gemological Institute

FD - 10 20



THIS DOCUMENT WAS PRODUCED WITH THE FOLLOWING SECURITY MEASURES: SPECIAL DOCUMENT PAPER, INK SCREENS, WATERMARK, BACKGROUND DESIGNS, HOLOGRAM AND OTHER SECURITY FEATURES NOT LISTED AND DO EXCEED DOCUMENT SECURITY INDUSTRY GUIDELINES

**www.igi.org**

December 10, 2025  
IGI Report No LG752553397  
ROUND BRILLIANT

|                 |                       |               |                  |
|-----------------|-----------------------|---------------|------------------|
| ROUND BRILLIANT | 0.80 - 0.83 X 5.34 MM | Carat Weight  | 2.82 CARATS      |
|                 |                       | Color Grade   | E                |
|                 |                       | Clarity Grade | VS 2             |
|                 |                       | Cut Grade     | IDEAL            |
|                 |                       | Depth         | 60.6%            |
|                 |                       | Table         | 59%              |
|                 |                       | Girdle        | Medium (faceted) |
|                 |                       | Culet         | Pointed          |
|                 |                       | Polish        | EXCELLENT        |
|                 |                       | Symmetry      | EXCELLENT        |
|                 |                       | Fluorescence  | NONE             |

**Comments:**  
This Laboratory Grown Diamond was created by Chemical Vapor Deposition (CVD) growth process.