



**ELECTRONIC COPY**

## LABORATORY GROWN DIAMOND REPORT

LG752551511  
Report verification at [igi.org](http://igi.org)

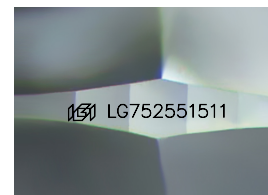
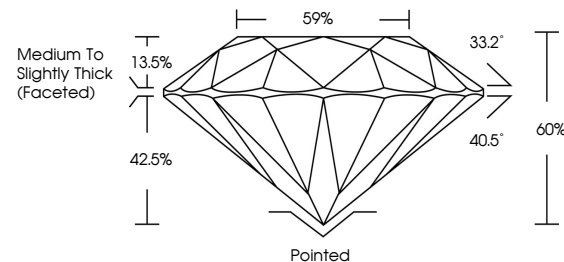
November 28, 2025	
IGI Report Number	LG752551511
Description	LABORATORY GROWN DIAMOND
Shape and Cutting Style	ROUND BRILLIANT
Measurements	11.08 - 11.14 X 6.66 MM
GRADING RESULTS	
Carat Weight	5.06 CARATS
Color Grade	E
Clarity Grade	VVS 2
Cut Grade	IDEAL

### ADDITIONAL GRADING INFORMATION

Polish	EXCELLENT
Symmetry	EXCELLENT
Fluorescence	NONE
Inscription(s)	151 LG752551511

Comments: This Laboratory Grown Diamond was created by Chemical Vapor Deposition (CVD) growth process.  
Type IIa

## PROPORTIONS



Sample Image Used

## COLOR

D E F G H I J Faint Very Light Light

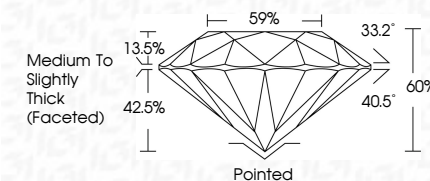
## CLARITY

FL	IF	VVS <sup>1-2</sup>	VS <sup>1-2</sup>	SI <sup>1-2</sup>	I <sup>1-3</sup>
Flawless	Internally Flawless	Very Very Slightly Included	Very Slightly Included	Slightly Included	Included


## LABORATORY GROWN DIAMOND REPORT



November 28, 2025	
IGI Report Number	LG752551511
Description	LABORATORY GROWN DIAMOND
Shape and Cutting Style	ROUND BRILLIANT
Measurements	11.08 - 11.14 X 6.66 MM
GRADING RESULTS	
Carat Weight	5.06 CARATS
Color Grade	E
Clarity Grade	VVS 2
Cut Grade	IDEAL



### ADDITIONAL GRADING INFORMATION

Polish	EXCELLENT
Symmetry	EXCELLENT
Fluorescence	NONE
Inscription(s)	 LG752551511
Comments: This Laboratory Grown Diamond was created by Chemical Vapor Deposition (CVD) growth process.	
Type IIa	



IG



© IGI 2020, International Gemological Institute

FD - 10 20



THIS DOCUMENT WAS PRODUCED WITH THE FOLLOWING SECURITY MEASURES: SPECIAL DOCUMENT PAPER, INK SCREENS, WATERMARK, BACKGROUND DESIGNS, HOLOGRAM AND OTHER SECURITY FEATURES NOT LISTED AND DO EXCEED DOCUMENT SECURITY INDUSTRY GUIDELINES

**www.igi.org**

November 28, 2025  
 IGI Report No LG752551511  
 ROUND BRILLIANT

ROUND BRILLIANT  
11.08 - 11.14 X 6.66 MM

11.08 - 11.14 X 6.66 MM  
Carat Weight  
5.06 CARATS

Color Grade

Clarity Grade	WS 2
Out Grade	IDEAL

	IDEAL	60%
Cut Grade		
Depth		

Dep III	60%
Table	59%

Girdle

	Pointed	Culet
(faceted)		

Quiet	Pointed
Polish	EXCELLENT

Symmetry	EXCELLENT
Fluorescence	NONE

Fluorescence	NONE
Inscription(s)	(S) LG752551511

Comments:

**Comments:**  
This Laboratory Grown Diamond was  
created by Chemical Vapor Deposition

created by Chemical Vapor Deposition (CVD) growth process.

Type IIa