



ELECTRONIC COPY

LG752550174
Report verification at igi.org



December 11, 2025
IGI Report Number LG752550174
Description LABORATORY GROWN DIAMOND
Shape and Cutting Style ROUND BRILLIANT
Measurements 17.71 - 17.80 X 10.95 MM
GRADING RESULTS
Carat Weight 21.32 CARATS
Color Grade E
Clarity Grade VVS 2
Cut Grade IDEAL

December 11, 2025
IGI Report Number LG752550174
Description LABORATORY GROWN DIAMOND
Shape and Cutting Style ROUND BRILLIANT
Measurements 17.71 - 17.80 X 10.95 MM

GRADING RESULTS

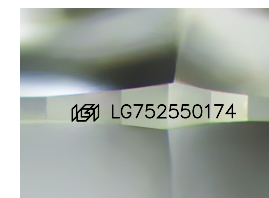
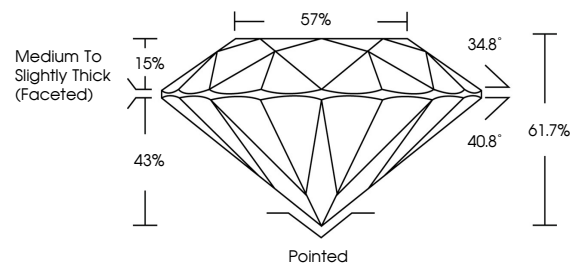
Carat Weight 21.32 CARATS
Color Grade E
Clarity Grade VVS 2
Cut Grade IDEAL

ADDITIONAL GRADING INFORMATION

Polish EXCELLENT
Symmetry EXCELLENT
Fluorescence NONE
Inscription(s) IGI LG752550174

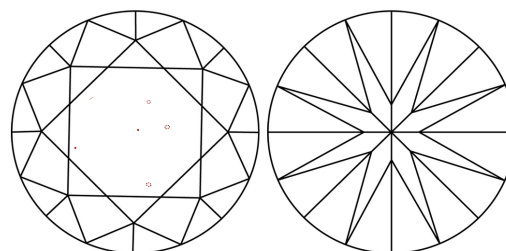
Comments: This Laboratory Grown Diamond was created by Chemical Vapor Deposition (CVD) growth process. Type IIa

PROPORTIONS



Sample Image Used

CLARITY CHARACTERISTICS



KEY TO SYMBOLS

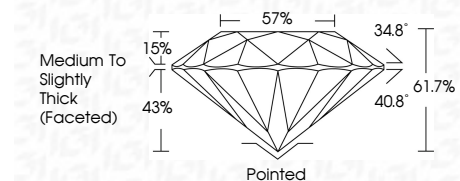
Red symbols indicate internal characteristics.
Green symbols indicate external characteristics.

COLOR

D E F G H I J Faint Very Light Light

CLARITY

FL IF VS 1-2 VS 1-2 SI 1-2 I 1-3
Flawless Internally Flawless Very Very Slightly Included Very Slightly Included Slightly Included Included



ADDITIONAL GRADING INFORMATION

Polish EXCELLENT
Symmetry EXCELLENT
Fluorescence NONE
Inscription(s) IGI LG752550174
Comments: This Laboratory Grown Diamond was created by Chemical Vapor Deposition (CVD) growth process. Type IIa



December 11, 2025
IGI Report No LG752550174
ROUND BRILLIANT
17.71 - 17.80 X 10.95 MM
21.32 CARATS E
Color Grade VVS 2
Clarity Grade IDEAL
Depth 61.7%
Table 57%
Girdle Medium To Slightly Thick (Faceted)
Culet Pointed
Polish EXCELLENT
Symmetry EXCELLENT
Fluorescence NONE
Inscription(s) IGI LG752550174
Comments: This Laboratory Grown Diamond was created by Chemical Vapor Deposition (CVD) growth process. Type IIa