



ELECTRONIC COPY

LG752545840
Report verification at igi.org



December 29, 2025
IGI Report Number **LG752545840**
Description **LABORATORY GROWN DIAMOND**
Shape and Cutting Style **PRINCESS CUT**
Measurements **6.01 X 5.91 X 4.57 MM**
GRADING RESULTS
Carat Weight **1.51 CARAT**
Color Grade **FANCY VIVID GREEN**
Clarity Grade **VS 1**

December 29, 2025
IGI Report Number **LG752545840**
Description **LABORATORY GROWN DIAMOND**
Shape and Cutting Style **PRINCESS CUT**
Measurements **6.01 X 5.91 X 4.57 MM**

GRADING RESULTS

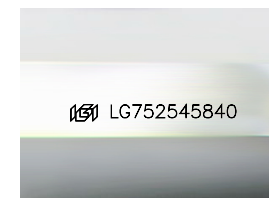
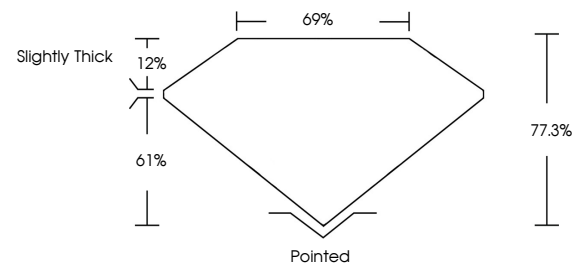
Carat Weight **1.51 CARAT**
Color Grade **FANCY VIVID GREEN**
Clarity Grade **VS 1**

ADDITIONAL GRADING INFORMATION

Polish **VERY GOOD**
Symmetry **VERY GOOD**
Fluorescence **NONE**
Inscription(s) **IGI LG752545840**

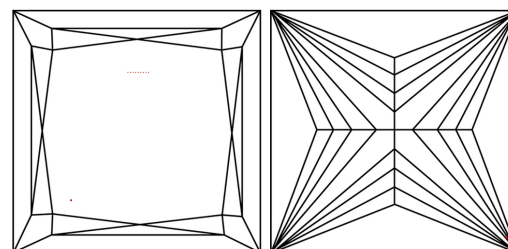
Comments: This Laboratory Grown Diamond was created by Chemical Vapor Deposition (CVD) growth process.
Indications of post-growth treatment.

PROPORTIONS



Sample Image Used

CLARITY CHARACTERISTICS



KEY TO SYMBOLS

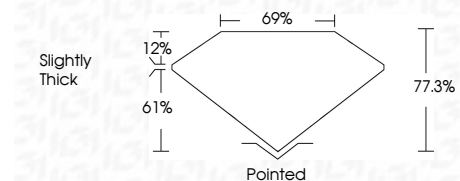
Red symbols indicate internal characteristics.
Green symbols indicate external characteristics.

COLOR

D E F G H I J Faint Very Light Light

CLARITY

FL	IF	VS ¹⁻²	VS ¹⁻²	SI ¹⁻²	I ¹⁻³
Flawless	Internally Flawless	Very Very Slightly Included	Very Slightly Included	Slightly Included	Included



ADDITIONAL GRADING INFORMATION

Polish **VERY GOOD**
Symmetry **VERY GOOD**
Fluorescence **NONE**
Inscription(s) **IGI LG752545840**
Comments: This Laboratory Grown Diamond was created by Chemical Vapor Deposition (CVD) growth process.
Indications of post-growth treatment.



December 29, 2025
IGI Report No **LG752545840**
PRINCESS CUT
6.01 X 5.91 X 4.57 MM
Carat Weight **1.51 CARAT**
Color Grade **FANCY VIVID GREEN**
Clarity Grade **VS 1**
Depth **77.3%**
Table **69%**
Girdle **Slightly Thick**
Culet **Pointed**
Polish **VERY GOOD**
Symmetry **VERY GOOD**
Fluorescence **NONE**
Inscription(s) **IGI LG752545840**
Comments: This Laboratory Grown Diamond was created by Chemical Vapor Deposition (CVD) growth process.
Indications of post-growth treatment.