



ELECTRONIC COPY

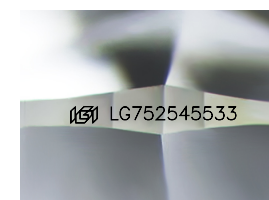
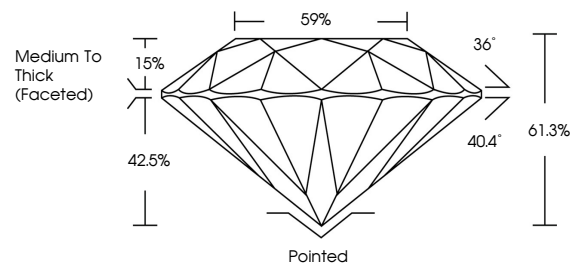
LG752545533
Report verification at igi.org



December 31, 2025
IGI Report Number **LG752545533**
Description **LABORATORY GROWN DIAMOND**
Shape and Cutting Style **ROUND BRILLIANT**
Measurements **6.33 - 6.42 X 3.91 MM**
GRADING RESULTS
Carat Weight **1.00 CARAT**
Color Grade **I**
Clarity Grade **VS 1**
Cut Grade **VERY GOOD**

December 31, 2025
IGI Report Number **LG752545533**
Description **LABORATORY GROWN DIAMOND**
Shape and Cutting Style **ROUND BRILLIANT**
Measurements **6.33 - 6.42 X 3.91 MM**

PROPORTIONS

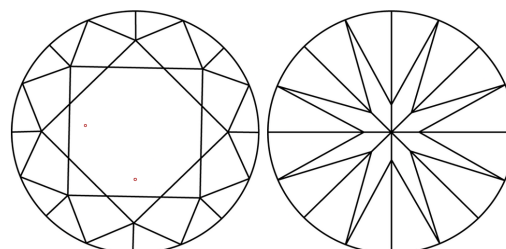


Sample Image Used

GRADING RESULTS

Carat Weight **1.00 CARAT**
Color Grade **I**
Clarity Grade **VS 1**
Cut Grade **VERY GOOD**

CLARITY CHARACTERISTICS



KEY TO SYMBOLS

Red symbols indicate internal characteristics.
Green symbols indicate external characteristics.

ADDITIONAL GRADING INFORMATION

Polish **EXCELLENT**
Symmetry **EXCELLENT**
Fluorescence **NONE**
Inscription(s) **IGI LG752545533**

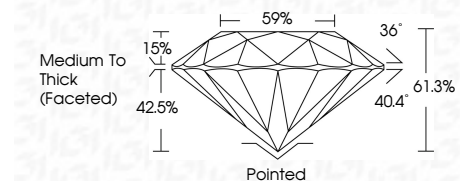
Comments: This Laboratory Grown Diamond was created by Chemical Vapor Deposition (CVD) growth process.
Type IIa

COLOR

D E F G H I J Faint Very Light Light

CLARITY

FL	IF	VS ¹⁻²	VS ¹⁻²	SI ¹⁻²	I ¹⁻³
Flawless	Internally Flawless	Very Very Slightly Included	Very Slightly Included	Slightly Included	Included



ADDITIONAL GRADING INFORMATION

Polish **EXCELLENT**
Symmetry **EXCELLENT**
Fluorescence **NONE**
Inscription(s) **IGI LG752545533**
Comments: This Laboratory Grown Diamond was created by Chemical Vapor Deposition (CVD) growth process.
Type IIa



December 31, 2025
IGI Report No LG752545533
ROUND BRILLIANT
6.33 - 6.42 X 3.91 MM
1.00 CARAT
Color Grade **I**
Clarity Grade **VS 1**
Depth **61.3%**
Table **59%**
Girdle **Medium To Thick (Faceted)**
Culet **Pointed**
Polish **EXCELLENT**
Symmetry **EXCELLENT**
Fluorescence **NONE**
Inscription(s) **IGI LG752545533**
Comments: This Laboratory Grown Diamond was created by Chemical Vapor Deposition (CVD) growth process.
Type IIa