



**ELECTRONIC COPY**

LG752545170  
Report verification at igi.org



December 31, 2025

IGI Report Number **LG752545170**

Description **LABORATORY GROWN DIAMOND**

Shape and Cutting Style **FLOWER MODIFIED BRILLIANT**

Measurements **6.90 X 6.89 X 4.22 MM**

**GRADING RESULTS**

Carat Weight **1.16 CARAT**

Color Grade **F**

Clarity Grade **VVS 2**

December 31, 2025  
IGI Report Number **LG752545170**  
Description **LABORATORY GROWN DIAMOND**  
Shape and Cutting Style **FLOWER MODIFIED BRILLIANT**  
Measurements **6.90 X 6.89 X 4.22 MM**

**GRADING RESULTS**

Carat Weight **1.16 CARAT**

Color Grade **F**

Clarity Grade **VVS 2**

**ADDITIONAL GRADING INFORMATION**

Polish **EXCELLENT**

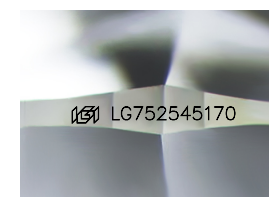
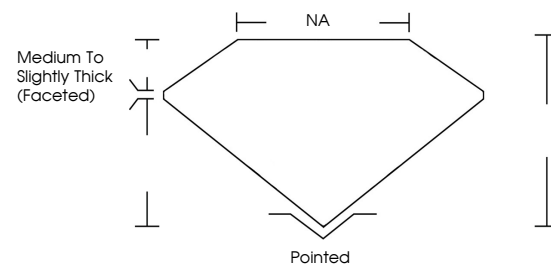
Symmetry **EXCELLENT**

Fluorescence **NONE**

Inscription(s) **IGI LG752545170**

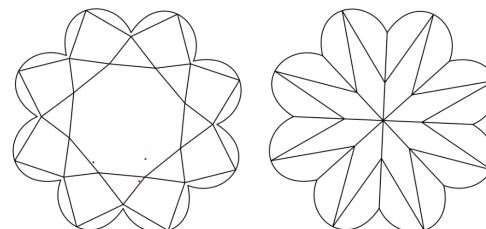
Comments: This Laboratory Grown Diamond was created by Chemical Vapor Deposition (CVD) growth process.  
Type IIa

**PROPORTIONS**



Sample Image Used

**CLARITY CHARACTERISTICS**



**KEY TO SYMBOLS**

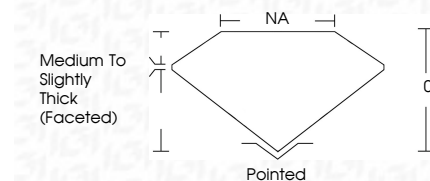
Red symbols indicate internal characteristics.  
Green symbols indicate external characteristics.

**COLOR**

D E F G H I J Faint Very Light Light

**CLARITY**

FL	IF	VVS <sup>1-2</sup>	VS <sup>1-2</sup>	SI <sup>1-2</sup>	I <sup>1-3</sup>
Flawless	Internally Flawless	Very Very Slightly Included	Very Slightly Included	Slightly Included	Included



**ADDITIONAL GRADING INFORMATION**

Polish **EXCELLENT**

Symmetry **EXCELLENT**

Fluorescence **NONE**

Inscription(s) **IGI LG752545170**

Comments: This Laboratory Grown Diamond was created by Chemical Vapor Deposition (CVD) growth process.  
Type IIa



December 31, 2025  
IGI Report No LG752545170  
**FLOWER MODIFIED BRILLIANT**  
6.90 X 6.89 X 4.22 MM  
1.16 CARAT  
F  
VVS 2  
0%  
NA  
Medium to Slightly Thick (Faceted)  
Pointed  
EXCELLENT  
EXCELLENT  
NONE  
IGI LG752545170  
Comments: This Laboratory Grown Diamond was created by Chemical Vapor Deposition (CVD) growth process.  
Type IIa