



ELECTRONIC COPY

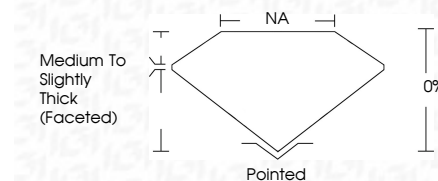
LG752545161
Report verification at igi.org



December 31, 2025
IGI Report Number LG752545161
Description LABORATORY GROWN DIAMOND
Shape and Cutting Style FLOWER MODIFIED BRILLIANT
Measurements 6.86 X 6.83 X 4.21 MM

GRADING RESULTS

Carat Weight 1.16 CARAT
Color Grade F
Clarity Grade VVS 2



ADDITIONAL GRADING INFORMATION

Polish EXCELLENT
Symmetry EXCELLENT
Fluorescence NONE
Inscription(s) IGI LG752545161
Comments: This Laboratory Grown Diamond was created by Chemical Vapor Deposition (CVD) growth process. Type IIa



December 31, 2025
IGI Report No LG752545161
FLOWER MODIFIED BRILLIANT
6.86 X 6.83 X 4.21 MM
1.16 CARAT
F
VVS 2
0%
NA
Medium to Slightly Thick (Faceted)
Pointed
EXCELLENT
EXCELLENT
NONE
IGI LG752545161
Comments: This Laboratory Grown Diamond was created by Chemical Vapor Deposition (CVD) growth process. Type IIa

December 31, 2025
IGI Report Number LG752545161
Description LABORATORY GROWN DIAMOND
Shape and Cutting Style FLOWER MODIFIED BRILLIANT
Measurements 6.86 X 6.83 X 4.21 MM

GRADING RESULTS

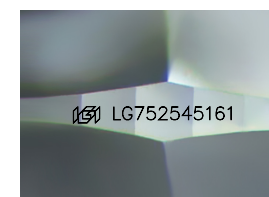
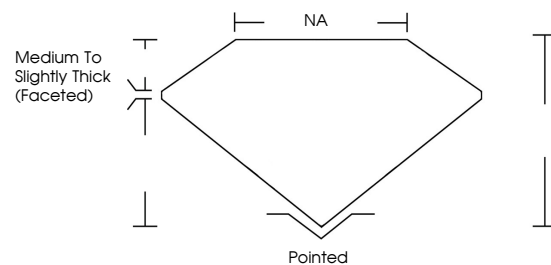
Carat Weight 1.16 CARAT
Color Grade F
Clarity Grade VVS 2

ADDITIONAL GRADING INFORMATION

Polish EXCELLENT
Symmetry EXCELLENT
Fluorescence NONE
Inscription(s) IGI LG752545161

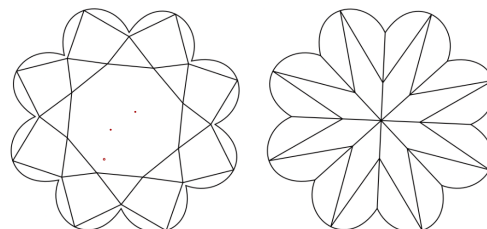
Comments: This Laboratory Grown Diamond was created by Chemical Vapor Deposition (CVD) growth process. Type IIa

PROPORTIONS



Sample Image Used

CLARITY CHARACTERISTICS



KEY TO SYMBOLS

Red symbols indicate internal characteristics.
Green symbols indicate external characteristics.

COLOR

D E F G H I J Faint Very Light Light

CLARITY

FL IF VVS 1-2 VS 1-2 SI 1-2 I 1-3
Flawless Internally Flawless Very Very Slightly Included Very Slightly Included Slightly Included Included

