

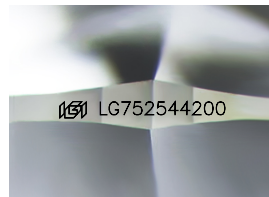
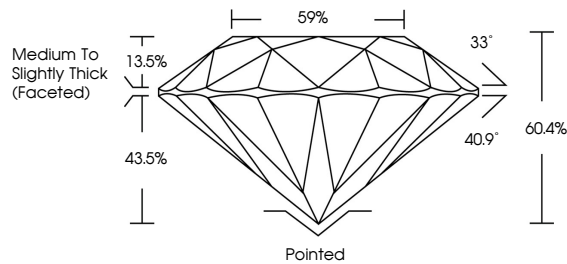


**INTERNATIONAL
GEMOLOGICAL
INSTITUTE**

ELECTRONIC COPY

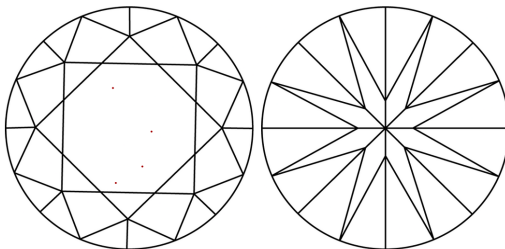
LG752544200
Report verification at igi.org

PROPORTIONS



Sample Image Used

CLARITY CHARACTERISTICS



KEY TO SYMBOLS

Red symbols indicate internal characteristics.
Green symbols indicate external characteristics.

COLOR

D E F G H I J Faint Very Light Light

CLARITY

FL IF WS¹⁻² VS¹⁻² S¹⁻² |¹⁻³

| | | | | | |
|----------|---------------------|-----------------------------|------------------------|-------------------|----------|
| Flawless | Internally Flawless | Very Very Slightly Included | Very Slightly Included | Slightly Included | Included |
|----------|---------------------|-----------------------------|------------------------|-------------------|----------|



December 10, 2025

IGI Report Number **LG752544200**

| | |
|-------------|--------------------------|
| Description | LABORATORY GROWN DIAMOND |
|-------------|--------------------------|

Shape and Cutting Style **ROUND BRILLIANT**

Measurements 10.07 - 10.12 X 6.09 MM

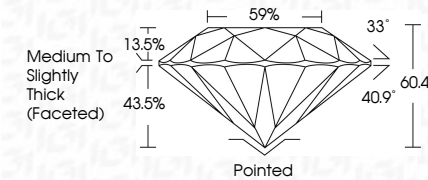
GRADING RESULTS

Carat Weight **3.80 CARATS**

| | |
|-------------|---|
| Color Grade | E |
|-------------|---|

Clarity Grade **VVS 2**

Cut Grade **IDEAL**



ADDITIONAL GRADING INFORMATION

Polish **EXCELLENT**Symmetry **EXCELLENT**Fluorescence **NONE**Inscription(s)  LG752544200

Comments: This Laboratory Grown Diamond was created by Chemical Vapor Deposition (CVD) growth process.
Type IIa



IG



© IGI 2020, International Gemological Institute

FD - 10 20

www.igi.org

THIS DOCUMENT WAS PRODUCED WITH THE FOLLOWING SECURITY MEASURES: SPECIAL DOCUMENT PAPER, INK SCREENS, WATERMARK, BACKGROUND DESIGNS, HOLOGRAM AND OTHER SECURITY FEATURES NOT LISTED AND DO EXCEED DOCUMENT SECURITY INDUSTRY GUIDELINES

December 10, 2025
IGI Report No LG752544200
ROUND BRILLIANT

| | |
|-------------------------|------------------------------------|
| 10.07 - 10.12 X 6.09 MM | 3.80 CARATS |
| Carat Weight | E |
| Color Grade | VVS 2 |
| Clarity Grade | IDEAL |
| Cut Grade | 60.4% |
| Depth | 59% |
| Table | Medium to slightly Thick (faceted) |
| Girdle | |
| Culet | Pointed |
| Polish | EXCELLENT |
| Symmetry | EXCELLENT |
| Fluorescence | NONE |
| Inscriptions | 4611 G17014600 |

Comments:
This Laboratory Grown Diamond was created by Chemical Vapor Deposition (CVD) growth process.