



ELECTRONIC COPY

LABORATORY GROWN DIAMOND REPORT

LG752542756
Report verification at igi.org

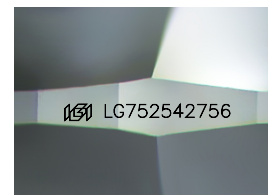
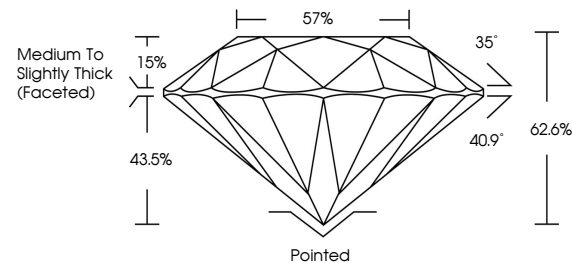
November 28, 2025	
IGI Report Number	LG752542756
Description	LABORATORY GROWN DIAMOND
Shape and Cutting Style	ROUND BRILLIANT
Measurements	6.38 - 6.41 X 4.00 MM
GRADING RESULTS	
Carat Weight	1.01 CARAT
Color Grade	D
Clarity Grade	VVS 2
Cut Grade	EXCELLENT

ADDITIONAL GRADING INFORMATION

Polish	EXCELLENT
Symmetry	EXCELLENT
Fluorescence	NONE
Inscription(s)	 LG752542756

Comments: This Laboratory Grown Diamond was created by Chemical Vapor Deposition (CVD) growth process.
Type IIa

PROPORTIONS



Sample Image Used

COLOR

D E F G H I J Faint Very Light Light

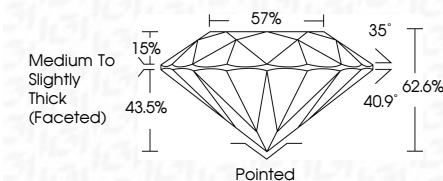
CLARITY

FL	IF	VVS ¹⁻²	VS ¹⁻²	SI ¹⁻²	I ¹⁻³
Flawless	Internally Flawless	Very Very Slightly Included	Very Slightly Included	Slightly Included	Included

LABORATORY GROWN DIAMOND REPORT



November 28, 2025	
IGI Report Number	LG752542756
Description	LABORATORY GROWN DIAMOND
Shape and Cutting Style	ROUND BRILLIANT
Measurements	6.38 - 6.41 X 4.00 MM
GRADING RESULTS	
Carat Weight	1.01 CARAT
Color Grade	D
Clarity Grade	VVS 2
Cut Grade	EXCELLENT



ADDITIONAL GRADING INFORMATION

Polish	EXCELLENT
Symmetry	EXCELLENT
Fluorescence	NONE
Inscription(s)	 LG752542756
<p>Comments: This Laboratory Grown Diamond was created by Chemical Vapor Deposition (CVD) growth process.</p> <p>Type IIa</p>	



© IGI 2020, International Gemological Institute

FD - 10 20



THIS DOCUMENT WAS PRODUCED WITH THE FOLLOWING SECURITY MEASURES: SPECIAL DOCUMENT PAPER, INK SCREENS, WATERMARK, BACKGROUND DESIGNS, HOLOGRAM AND OTHER SECURITY FEATURES NOT LISTED AND DO EXCEED DOCUMENT SECURITY INDUSTRY GUIDELINES

www.igi.org



November 28, 2025
GJ Report No | G752542756

GI Report No LG71
DOING BRILLIANT

5.38 - 6.41 X 4.00 MM
Carrot Weight 1.01 CARAT

3.36 - 3.41 X 4.00 MM
Carat Weight
1.01 CARAT

Color Grade	D
Clarity Grade	VS2

Clarity Grade	WS 2
FL	
IF	
VVS	
VS	
SI	
I	
P	

Depth	62.6%	57%
Table		

Girdle
Medium To Slightly
Thick (Faceted)

Culet	Pointed
-------	---------

Symmetry

Inscription(s)

1997-1998

This Laboratory Grown Diamond was created by Chemical Vapor Deposition

Type IIa