



**ELECTRONIC COPY**

## LABORATORY GROWN DIAMOND REPORT

November 28, 2025	
IGI Report Number	LG752538870
Description	LABORATORY GROWN DIAMOND
Shape and Cutting Style	SQUARE CUSHION MODIFIED BRILLIANT
Measurements	8.49 X 8.32 X 5.59 MM

## GRADING RESULTS

Carat Weight	3.06 CARATS
Color Grade	E
Clarity Grade	VS 1

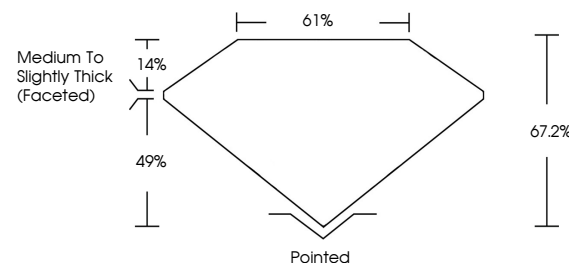
### ADDITIONAL GRADING INFORMATION

Polish	EXCELLENT
Symmetry	EXCELLENT
Fluorescence	NONE
Inscription(s)	 LG752538870

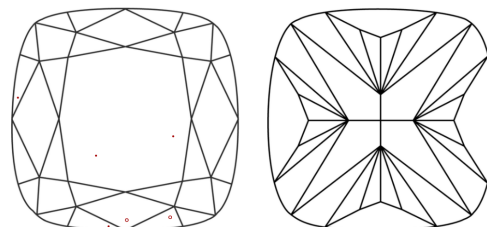
Comments: This Laboratory Grown Diamond was created by Chemical Vapor Deposition (CVD) growth process.  
Type IIa

LG752538870  
Report verification at [igi.org](https://igi.org)

## PROPORTIONS

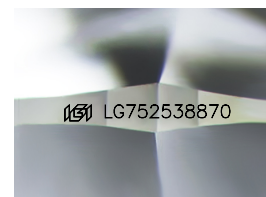


## CLARITY CHARACTERISTICS



## KEY TO SYMBOLS

Red symbols indicate internal characteristics.  
Green symbols indicate external characteristics.



Sample Image Used

COLOR

D E F G H I J Faint Very Light Light

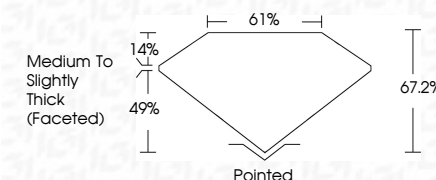
## CLARITY

FL	IF	VVS <sup>1-2</sup>	VS <sup>1-2</sup>	SI <sup>1-2</sup>	I <sup>1-3</sup>
Flawless	Internally Flawless	Very Very Slightly Included	Very Slightly Included	Slightly Included	Included

## LABORATORY GROWN DIAMOND REPORT



November 28, 2025	
IGI Report Number	LG752538870
Description	LABORATORY GROWN DIAMOND
Shape and Cutting Style	SQUARE CUSHION MODIFIED BRILLIANT
Measurements	8.49 X 8.32 X 5.59 MM
GRADING RESULTS	
Carat Weight	3.06 CARATS
Color Grade	E
Clarity Grade	VS 1



### ADDITIONAL GRADING INFORMATION

Polish	EXCELLENT
Symmetry	EXCELLENT
Fluorescence	NONE
Inscription(s)	<del>163</del> LG752538870
Comments: This Laboratory Grown Diamond was created by Chemical Vapor Deposition (CVD) growth process.	
Type IIa	



© IGI 2020, International Gemological Institute

FD - 10 20

**www.igi.org**

THIS DOCUMENT WAS PRODUCED WITH THE FOLLOWING SECURITY MEASURES: SPECIAL DOCUMENT PAPER, INK SCREENS, WATERMARK, BACKGROUND DESIGNS, HOLOGRAM AND OTHER SECURITY FEATURES NOT LISTED AND DO EXCEED DOCUMENT SECURITY INDUSTRY GUIDELINES

November 28, 2025	3.06 CARATS	E	VS 1	67.2%	61%	Polished	EXCELLENT	EXCELLENT	NONE	1691 LG752539870	<p>Comments:            This is a Fancy Gray Diamond was            created by Chemical Vapor Deposition            (CVD) growth process.            Type IIa</p>
<p>GI Report No. LG752539870</p> <p>SQUARE CLASHION MODIFIED BRILLIANT</p> <p>4.07 X 4.32 X 5.59 MM</p>	Carat Weight	Color Grade	Clarity Grade	Depth	Table	Girdle	Symmetry	Fluorescence	Inscriptions(s)		