



# INTERNATIONAL GEMOLOGICAL INSTITUTE

ELECTRONIC COPY

## LABORATORY GROWN DIAMOND REPORT

November 27, 2025

IGI Report Number

LG752534108

Description

LABORATORY GROWN DIAMOND

Shape and Cutting Style

OVAL BRILLIANT

Measurements

6.87 X 4.87 X 2.94 MM

### GRADING RESULTS

Carat Weight

0.61 CARAT

Color Grade

D

Clarity Grade

VVS 2

### ADDITIONAL GRADING INFORMATION

Polish

VERY GOOD

Symmetry

EXCELLENT

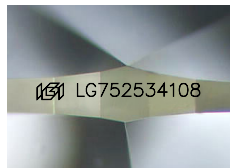
Fluorescence

NONE

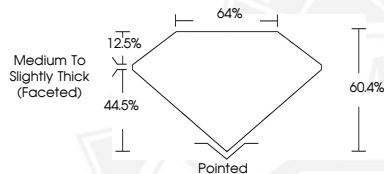
Inscription(s)

IGI LG752534108

Comments: This Laboratory Grown Diamond was created by Chemical Vapor Deposition (CVD) growth process. Type IIa



Sample Image Used



THIS DOCUMENT WAS PRODUCED WITH THE FOLLOWING SECURITY MEASURES: SPECIAL DOCUMENT PAPER, INK SCREENS, WATERMARK, BACKGROUND DESIGNS, HOLOGRAM AND OTHER SECURITY FEATURES NOT LISTED AND DO EXCEED DOCUMENT SECURITY INDUSTRY GUIDELINES.

For terms & conditions and to verify this report, please visit [www.igi.org](http://www.igi.org)



November 27, 2025

IGI Report Number LG752534108

OVAL BRILLIANT

LABORATORY GROWN DIAMOND

6.87 X 4.87 X 2.94 MM

Carat Weight 0.61 CARAT

Color Grade D

Clarity Grade VVS 2

Polish VERY GOOD

Symmetry EXCELLENT

Fluorescence NONE

Inscription(s) IGI LG752534108

Comments: This Laboratory Grown Diamond was created by Chemical Vapor Deposition (CVD) growth process. Type IIa



November 27, 2025

IGI Report Number LG752534108

OVAL BRILLIANT

LABORATORY GROWN DIAMOND

6.87 X 4.87 X 2.94 MM

Carat Weight 0.61 CARAT

Color Grade D

Clarity Grade VVS 2

Polish VERY GOOD

Symmetry EXCELLENT

Fluorescence NONE

Inscription(s) IGI LG752534108

Comments: This Laboratory Grown Diamond was created by Chemical Vapor Deposition (CVD) growth process. Type IIa