



ELECTRONIC COPY

LABORATORY GROWN DIAMOND REPORT

LG752532359
Report verification at igi.org

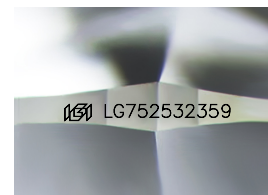
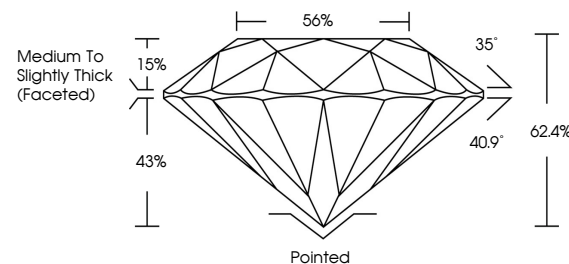
December 8, 2025	
IGI Report Number	LG752532359
Description	LABORATORY GROWN DIAMOND
Shape and Cutting Style	ROUND BRILLIANT
Measurements	8.04 - 8.10 X 5.03 MM
GRADING RESULTS	
Carat Weight	2.02 CARATS
Color Grade	G
Clarity Grade	VVS 1
Cut Grade	IDEAL

ADDITIONAL GRADING INFORMATION

Polish	EXCELLENT
Symmetry	EXCELLENT
Fluorescence	NONE
Inscription(s)	15 LG752532359

Comments: This Laboratory Grown Diamond was created by Chemical Vapor Deposition (CVD) growth process.
Type IIa

PROPORTIONS



Sample Image Used

COLOR

D E F G H I J Faint Very Light Light

CLARITY

FL	IF	VVS ¹⁻²	VS ¹⁻²	SI ¹⁻²	I ¹⁻³
Flawless	Internally Flawless	Very Very Slightly Included	Very Slightly Included	Slightly Included	Included

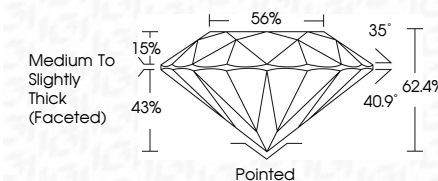
LABORATORY GROWN DIAMOND REPORT



December 8, 2025	
IGI Report Number	LG752532359
Description	LABORATORY GROWN DIAMOND
Shape and Cutting Style	ROUND BRILLIANT
Measurements	8.04 - 8.10 X 5.03 MM
GRADING RESULTS	
Carat Weight	2.02 CARATS
Color Grade	G
Clarity Grade	VVS 1
Cut Grade	IDEAL

ADDITIONAL GRADING INFORMATION

Polish	EXCELLENT
Symmetry	EXCELLENT
Fluorescence	NONE
Inscription(s)	 LG752532359
<p>Comments: This Laboratory Grown Diamond was created by Chemical Vapor Deposition (CVD) growth process.</p> <p>Type IIa</p>	



© IGI 2020, International Gemological Institute

FD - 10 20



THIS DOCUMENT WAS PRODUCED WITH THE FOLLOWING SECURITY MEASURES: SPECIAL DOCUMENT PAPER, INK SCREENS, WATERMARK, BACKGROUND DESIGNS, HOLOGRAM AND OTHER SECURITY FEATURES NOT LISTED AND DO EXCEED DOCUMENT SECURITY INDUSTRY GUIDELINES

www.igi.org

December 8, 2025
 LGI Report No LG752532359
 ROUND BRILLIANT

5.04 - 8.10 x 5.03 MM	2.02 CARATS
Carat Weight	VS 1
Color Grade	IDEAL
Clarity Grade	62-6%
Cut Grade	56%
Depth	Medium to Slightly Thick (Faceted)
Table	Pointed
Girdle	EXCELLENT
Culet	EXCELLENT
Polish	NONE
Symmetry	
Fluorescence	

Comments:
This Laboratory Grown Diamond was
created by Chemical Vapor Deposition
(CVD) growth process.