



**ELECTRONIC COPY**

## LABORATORY GROWN DIAMOND REPORT

December 6, 2025	
IGI Report Number	LG752532206
Description	LABORATORY GROWN DIAMOND
Shape and Cutting Style	ROUND BRILLIANT
Measurements	8.17 - 8.20 X 4.94 MM
GRADING RESULTS	
Carat Weight	2.02 CARATS
Color Grade	D
Clarity Grade	VS 1
Cut Grade	IDEAL

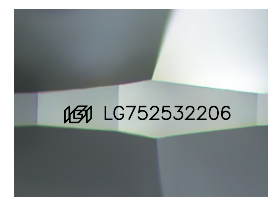
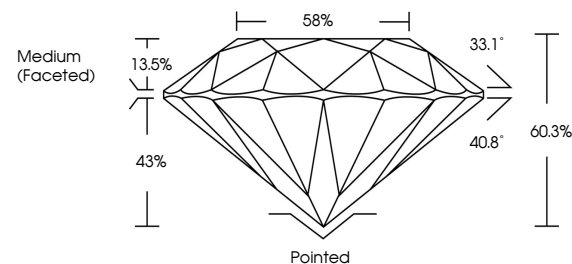
### ADDITIONAL GRADING INFORMATION

Polish	EXCELLENT
Symmetry	EXCELLENT
Fluorescence	NONE
Inscription(s)	151 LG752532206

Comments: This Laboratory Grown Diamond was created by Chemical Vapor Deposition (CVD) growth process.  
Type IIa

LG752532206  
Report verification at lqi.org

## PROPORTIONS



Sample Image Used

## COLOR

D E F G H I J Faint Very Light Light

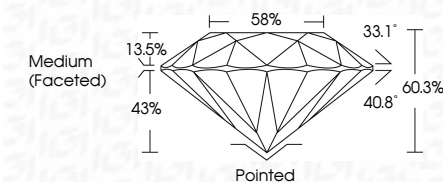
## CLARITY

FL	IF	VVS <sup>1-2</sup>	VS <sup>1-2</sup>	SI <sup>1-2</sup>	I <sup>1-3</sup>
Flawless	Internally Flawless	Very Very Slightly Included	Very Slightly Included	Slightly Included	Included

## LABORATORY GROWN DIAMOND REPORT



December 6, 2025	
IGI Report Number	LG752532206
Description	LABORATORY GROWN DIAMOND
Shape and Cutting Style	ROUND BRILLIANT
Measurements	8.17 - 8.20 X 4.94 MM
GRADING RESULTS	
Carat Weight	2.02 CARATS
Color Grade	D
Clarity Grade	VS 1
Cut Grade	IDEAL



### ADDITIONAL GRADING INFORMATION

Polish	EXCELLENT
Symmetry	EXCELLENT
Fluorescence	NONE
Inscription(s)	(修) LG752532206

Comments: This Laboratory Grown Diamond was created by Chemical Vapor Deposition (CVD) growth process.

Type IIa



© IGI 2020, International Gemological Institute

FD - 10 20



THIS DOCUMENT WAS PRODUCED WITH THE FOLLOWING SECURITY MEASURES: SPECIAL DOCUMENT PAPER, INK SCREENS, WATERMARK, BACKGROUND DESIGNS, HOLOGRAM AND OTHER SECURITY FEATURES NOT LISTED AND DO EXCEED DOCUMENT SECURITY INDUSTRY GUIDELINES

**www.igi.org**

December 6, 2025  
 IGI Report No LG752532206  
 ROUND BRILLIANT

ROUND BRILLIANT	
B.17 - 8.20 X 4.94 MM	
Carat Weight	2.02 CARATS
Color Grade	D
Clarity Grade	VS 1
Cut Grade	IDEAL
Depth	60.3%
Table	58%
Grade	Medium (Excellent)

	Pointed	EXCELLENT	EXCELLENT	NONE
Culet				
Polish				
Symmetry				
Fluorescence				

**Comments:**  
This Laboratory Grown Diamond was created by Chemical Vapor Deposition (CVD) growth process.