



ELECTRONIC COPY

LG752530179
Report verification at igi.org



December 2, 2025
IGI Report Number **LG752530179**
Description **LABORATORY GROWN DIAMOND**
Shape and Cutting Style **CUT CORNERED
RECTANGULAR MODIFIED
BRILLIANT**
Measurements **10.54 X 7.54 X 5.07 MM**
GRADING RESULTS
Carat Weight **3.58 CARATS**
Color Grade **FANCY DEEP BROWNISH
ORANGE**
Clarity Grade **VS 2**

LABORATORY GROWN DIAMOND REPORT

December 2, 2025
IGI Report Number **LG752530179**
Description **LABORATORY GROWN DIAMOND**
Shape and Cutting Style **CUT CORNERED RECTANGULAR
MODIFIED BRILLIANT**
Measurements **10.54 X 7.54 X 5.07 MM**

GRADING RESULTS

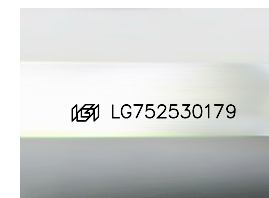
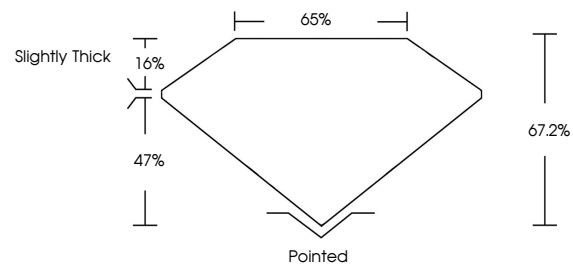
Carat Weight **3.58 CARATS**
Color Grade **FANCY DEEP BROWNISH
ORANGE**
Clarity Grade **VS 2**

ADDITIONAL GRADING INFORMATION

Polish **EXCELLENT**
Symmetry **EXCELLENT**
Fluorescence **NONE**
Inscription(s) **IGI LG752530179**

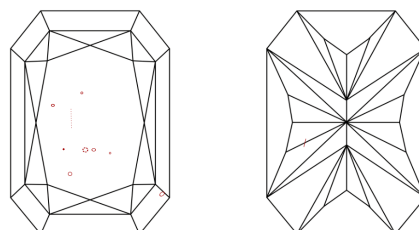
Comments: This Laboratory Grown Diamond was created by Chemical Vapor Deposition (CVD) growth process.
Indications of post-growth treatment.

PROPORTIONS



Sample Image Used

CLARITY CHARACTERISTICS



KEY TO SYMBOLS

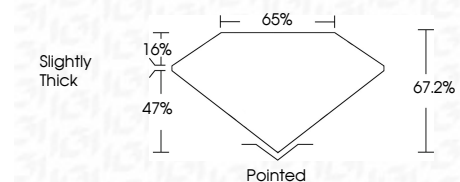
Red symbols indicate internal characteristics.
Green symbols indicate external characteristics.

COLOR

D E F G H I J Faint Very Light Light

CLARITY

FL	IF	VS ¹⁻²	VS ¹⁻²	SI ¹⁻²	I ¹⁻³
Flawless	Internally Flawless	Very Very Slightly Included	Very Slightly Included	Slightly Included	Included



ADDITIONAL GRADING INFORMATION

Polish **EXCELLENT**
Symmetry **EXCELLENT**
Fluorescence **NONE**
Inscription(s) **IGI LG752530179**
Comments: This Laboratory Grown Diamond was created by Chemical Vapor Deposition (CVD) growth process.
Indications of post-growth treatment.



December 2, 2025
IGI Report No LG752530179
CUT CORNERED RECT. MODIFIED BRILLIANT
10.54 X 7.54 X 5.07 MM
3.58 CARATS
Carat Weight
FANCY DEEP BROWNISH ORANGE
Color Grade
VS 2
Clarity Grade
67.2%
5.07
Depth
65%
Slightly Thick
Girdle
Pointed
Culet
EXCELLENT
Polish
EXCELLENT
Symmetry
NONE
Fluorescence
IGI LG752530179
Inscription(s)
Comments: This Laboratory Grown Diamond was created by Chemical Vapor Deposition (CVD) growth process.
Indications of post-growth treatment.