



ELECTRONIC COPY

LG752530171
Report verification at igi.org



December 2, 2025
IGI Report Number **LG752530171**
Description **LABORATORY GROWN DIAMOND**
Shape and Cutting Style **EMERALD CUT**
Measurements **8.80 X 7.08 X 4.77 MM**
GRADING RESULTS
Carat Weight **3.06 CARATS**
Color Grade **FANCY INTENSE BROWNISH PINK**
Clarity Grade **SI 1**

LABORATORY GROWN DIAMOND REPORT

December 2, 2025
IGI Report Number **LG752530171**
Description **LABORATORY GROWN DIAMOND**
Shape and Cutting Style **EMERALD CUT**
Measurements **8.80 X 7.08 X 4.77 MM**

GRADING RESULTS

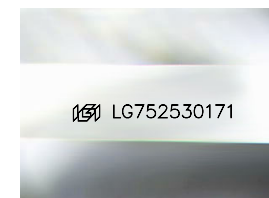
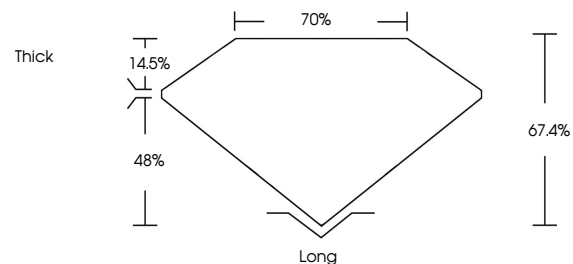
Carat Weight **3.06 CARATS**
Color Grade **FANCY INTENSE BROWNISH PINK**
Clarity Grade **SI 1**

ADDITIONAL GRADING INFORMATION

Polish **EXCELLENT**
Symmetry **EXCELLENT**
Fluorescence **STRONG**
Inscription(s) **IGI LG752530171**

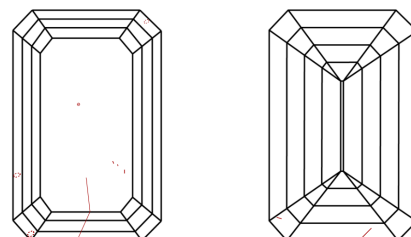
Comments: This Laboratory Grown Diamond was created by Chemical Vapor Deposition (CVD) growth process. Indications of post-growth treatment.

PROPORTIONS



Sample Image Used

CLARITY CHARACTERISTICS



KEY TO SYMBOLS

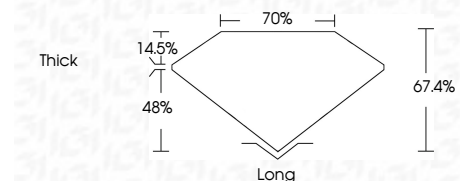
Red symbols indicate internal characteristics.
Green symbols indicate external characteristics.

COLOR

D E F G H I J Faint Very Light Light

CLARITY

FL	IF	VS ¹⁻²	VS ¹⁻²	SI ¹⁻²	I ¹⁻³
Flawless	Internally Flawless	Very Very Slightly Included	Very Slightly Included	Slightly Included	Included



ADDITIONAL GRADING INFORMATION

Polish **EXCELLENT**
Symmetry **EXCELLENT**
Fluorescence **STRONG**
Inscription(s) **IGI LG752530171**
Comments: This Laboratory Grown Diamond was created by Chemical Vapor Deposition (CVD) growth process. Indications of post-growth treatment.



December 2, 2025
IGI Report No LG752530171
EMERALD CUT
3.06 CARATS
Carat Weight
FANCY INTENSE BROWNISH PINK
Color Grade
SI 1
Clarity Grade
8.80 X 7.08 X 4.77 MM
Depth
70%
67.4%
Thick
Long
EXCELLENT
EXCELLENT
STRONG
IGI LG752530171
Inscription(s)

Comments: This Laboratory Grown Diamond was created by Chemical Vapor Deposition (CVD) growth process. Indications of post-growth treatment.