



ELECTRONIC COPY

LG752530146
Report verification at igi.org



December 6, 2025
IGI Report Number **LG752530146**
Description **LABORATORY GROWN DIAMOND**
Shape and Cutting Style **KITE MIXED CUT**
Measurements **14.90 X 7.82 X 5.56 MM**
GRADING RESULTS
Carat Weight **3.09 CARATS**
Color Grade **FANCY INTENSE YELLOW**
Clarity Grade **SI 1**

LABORATORY GROWN DIAMOND REPORT

December 6, 2025
IGI Report Number **LG752530146**
Description **LABORATORY GROWN DIAMOND**
Shape and Cutting Style **KITE MIXED CUT**
Measurements **14.90 X 7.82 X 5.56 MM**

GRADING RESULTS

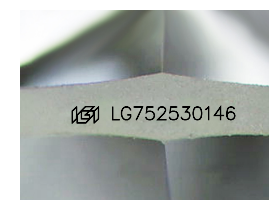
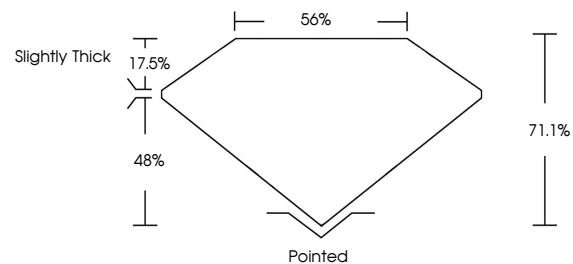
Carat Weight **3.09 CARATS**
Color Grade **FANCY INTENSE YELLOW**
Clarity Grade **SI 1**

ADDITIONAL GRADING INFORMATION

Polish **EXCELLENT**
Symmetry **EXCELLENT**
Fluorescence **NONE**
Inscription(s) **IGI LG752530146**

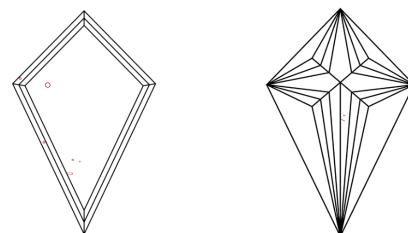
Comments: This Laboratory Grown Diamond was created by Chemical Vapor Deposition (CVD) growth process.

PROPORTIONS



Sample Image Used

CLARITY CHARACTERISTICS



KEY TO SYMBOLS

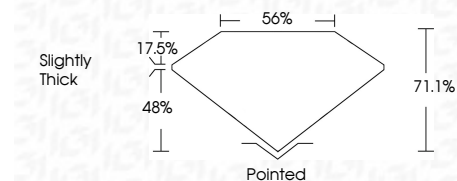
Red symbols indicate internal characteristics.
Green symbols indicate external characteristics.

COLOR

D E F G H I J Faint Very Light Light

CLARITY

FL	IF	VS ¹⁻²	VS ¹⁻²	SI ¹⁻²	I ¹⁻³
Flawless	Internally Flawless	Very Very Slightly Included	Very Slightly Included	Slightly Included	Included



ADDITIONAL GRADING INFORMATION

Polish **EXCELLENT**
Symmetry **EXCELLENT**
Fluorescence **NONE**
Inscription(s) **IGI LG752530146**
Comments: This Laboratory Grown Diamond was created by Chemical Vapor Deposition (CVD) growth process.



December 6, 2025
IGI Report No LG752530146
KITE MIXED CUT
3.09 CARATS
14.90 X 7.82 X 5.56 MM
FANCY INTENSE YELLOW
SI 1
71.1%
56%
Slightly Thick
Pointed
EXCELLENT
EXCELLENT
NONE
IGI LG752530146
Comments: This Laboratory Grown Diamond was created by Chemical Vapor Deposition (CVD) growth process.