



ELECTRONIC COPY

LG752530110
Report verification at igi.org



November 28, 2025
IGI Report Number **LG752530110**
Description **LABORATORY GROWN DIAMOND**
Shape and Cutting Style **MODIFIED EMERALD CUT**
Measurements **8.66 X 7.90 X 5.06 MM**
GRADING RESULTS
Carat Weight **3.51 CARATS**
Color Grade **FANCY INTENSE BROWNISH PINK**
Clarity Grade **SI 2**

LABORATORY GROWN DIAMOND REPORT

November 28, 2025
IGI Report Number **LG752530110**
Description **LABORATORY GROWN DIAMOND**
Shape and Cutting Style **MODIFIED EMERALD CUT**
Measurements **8.66 X 7.90 X 5.06 MM**

GRADING RESULTS

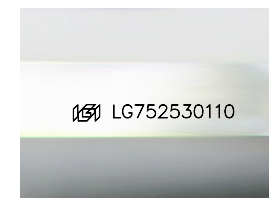
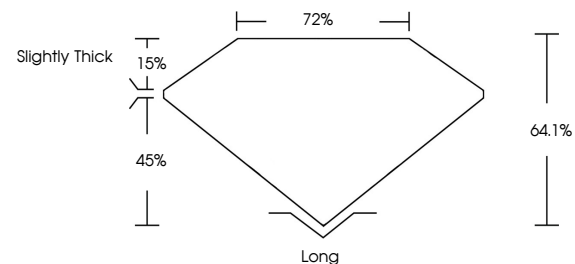
Carat Weight **3.51 CARATS**
Color Grade **FANCY INTENSE BROWNISH PINK**
Clarity Grade **SI 2**

ADDITIONAL GRADING INFORMATION

Polish **EXCELLENT**
Symmetry **EXCELLENT**
Fluorescence **STRONG**
Inscription(s) **IGI LG752530110**

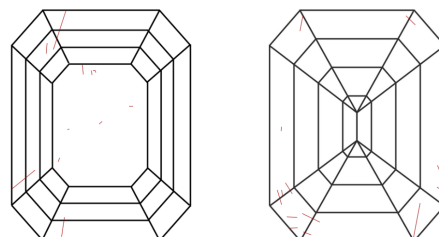
Comments: This Laboratory Grown Diamond was created by Chemical Vapor Deposition (CVD) growth process. Indications of post-growth treatment.

PROPORTIONS



Sample Image Used

CLARITY CHARACTERISTICS



KEY TO SYMBOLS

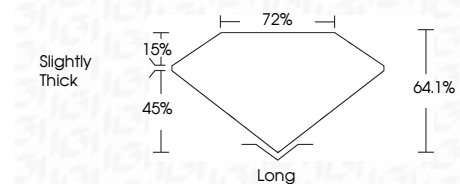
Red symbols indicate internal characteristics.
Green symbols indicate external characteristics.

COLOR

D E F G H I J Faint Very Light Light

CLARITY

FL	IF	VS ¹⁻²	VS ¹⁻²	SI ¹⁻²	I ¹⁻³
Flawless	Internally Flawless	Very Very Slightly Included	Very Slightly Included	Slightly Included	Included



ADDITIONAL GRADING INFORMATION

Polish **EXCELLENT**
Symmetry **EXCELLENT**
Fluorescence **STRONG**
Inscription(s) **IGI LG752530110**
Comments: This Laboratory Grown Diamond was created by Chemical Vapor Deposition (CVD) growth process. Indications of post-growth treatment.



November 28, 2025
IGI Report No **LG752530110**
MODIFIED EMERALD CUT
3.51 CARATS
FANCY INTENSE BROWNISH PINK
SI 2
8.66 X 7.90 X 5.06 MM
64.1%
72%
Slightly Thick
Long
EXCELLENT
EXCELLENT
STRONG
IGI LG752530110
Comments: This Laboratory Grown Diamond was created by Chemical Vapor Deposition (CVD) growth process. Indications of post-growth treatment.