



**ELECTRONIC COPY**

LG752530093  
Report verification at igi.org



December 2, 2025

IGI Report Number **LG752530093**

Description **LABORATORY GROWN DIAMOND**

Shape and Cutting Style **CUT CORNERED  
RECTANGULAR MODIFIED  
BRILLIANT**

Measurements **10.16 X 7.47 X 4.86 MM**

**GRADING RESULTS**

Carat Weight **3.27 CARATS**

Color Grade **FANCY VIVID BLUE**

Clarity Grade **VVS 2**

December 2, 2025

IGI Report Number **LG752530093**

Description **LABORATORY GROWN DIAMOND**

Shape and Cutting Style **CUT CORNERED RECTANGULAR  
MODIFIED BRILLIANT**

Measurements **10.16 X 7.47 X 4.86 MM**

**GRADING RESULTS**

Carat Weight **3.27 CARATS**

Color Grade **FANCY VIVID BLUE**

Clarity Grade **VVS 2**

**ADDITIONAL GRADING INFORMATION**

Polish **EXCELLENT**

Symmetry **EXCELLENT**

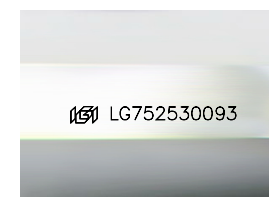
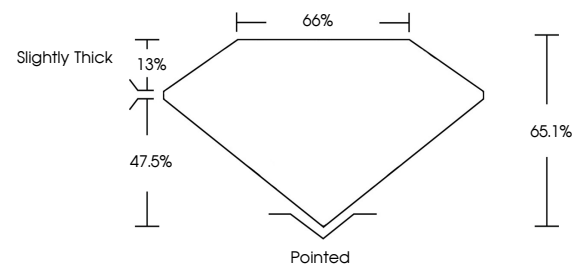
Fluorescence **NONE**

Inscription(s) **IGI LG752530093**

Comments: This Laboratory Grown Diamond was created by Chemical Vapor Deposition (CVD) growth process.

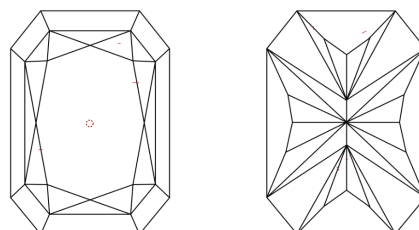
Indications of post-growth treatment.

**PROPORTIONS**



Sample Image Used

**CLARITY CHARACTERISTICS**



**KEY TO SYMBOLS**

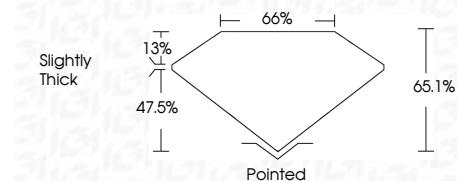
Red symbols indicate internal characteristics.  
Green symbols indicate external characteristics.

**COLOR**

D E F G H I J Faint Very Light Light

**CLARITY**

FL	IF	VVS <sup>1-2</sup>	VS <sup>1-2</sup>	SI <sup>1-2</sup>	I <sup>1-3</sup>
Flawless	Internally Flawless	Very Very Slightly Included	Very Slightly Included	Slightly Included	Included



**ADDITIONAL GRADING INFORMATION**

Polish **EXCELLENT**

Symmetry **EXCELLENT**

Fluorescence **NONE**

Inscription(s) **IGI LG752530093**

Comments: This Laboratory Grown Diamond was created by Chemical Vapor Deposition (CVD) growth process. Indications of post-growth treatment.



**IGI**



December 2, 2025  
IGI Report No LG752530093  
CUT CORNERED RECT. MODIFIED BRILLIANT  
10.16 X 7.47 X 4.86 MM  
3.27 CARATS  
FANCY VIVID BLUE  
VVS 2  
65.1%  
66%  
Slightly Thick  
Pointed  
EXCELLENT  
EXCELLENT  
NONE  
IGI LG752530093

Comments: This Laboratory Grown Diamond was created by Chemical Vapor Deposition (CVD) growth process. Indications of post-growth treatment.