



ELECTRONIC COPY

LG752530082
Report verification at igi.org



December 22, 2025

IGI Report Number **LG752530082**

Description **LABORATORY GROWN DIAMOND**

Shape and Cutting Style **SQUARE CUSHION ROSE CUT**

Measurements **9.73 X 9.30 X 4.54 MM**

GRADING RESULTS

Carat Weight **4.36 CARATS**

Color Grade **FANCY VIVID PINK**

Clarity Grade **VS 2**

December 22, 2025

IGI Report Number **LG752530082**

Description **LABORATORY GROWN DIAMOND**

Shape and Cutting Style **SQUARE CUSHION ROSE CUT**

Measurements **9.73 X 9.30 X 4.54 MM**

GRADING RESULTS

Carat Weight **4.36 CARATS**

Color Grade **FANCY VIVID PINK**

Clarity Grade **VS 2**

ADDITIONAL GRADING INFORMATION

Polish **EXCELLENT**

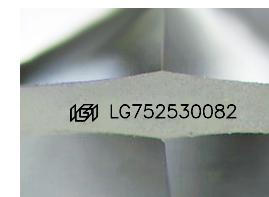
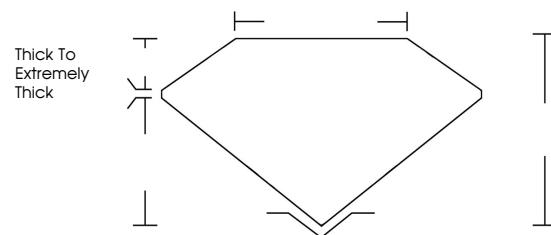
Symmetry **VERY GOOD**

Fluorescence **STRONG**

Inscription(s) **IGI LG752530082**

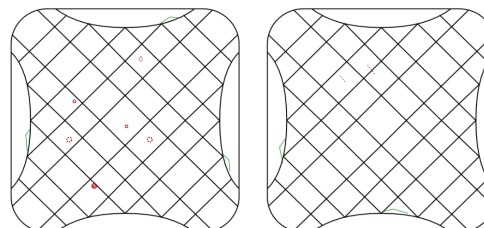
Comments: This Laboratory Grown Diamond was created by Chemical Vapor Deposition (CVD) growth process. Indications of post-growth treatment.

PROPORTIONS



Sample Image Used

CLARITY CHARACTERISTICS



KEY TO SYMBOLS

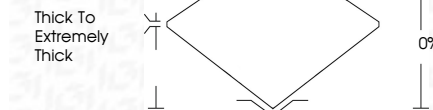
Red symbols indicate internal characteristics.
Green symbols indicate external characteristics.

COLOR

D E F G H I J Faint Very Light Light

CLARITY

FL	IF	VS ¹⁻²	VS ¹⁻²	SI ¹⁻²	I ¹⁻³
Flawless	Internally Flawless	Very Very Slightly Included	Very Slightly Included	Slightly Included	Included



ADDITIONAL GRADING INFORMATION

Polish **EXCELLENT**

Symmetry **VERY GOOD**

Fluorescence **STRONG**

Inscription(s) **IGI LG752530082**

Comments: This Laboratory Grown Diamond was created by Chemical Vapor Deposition (CVD) growth process. Indications of post-growth treatment.



IGI



December 22, 2025
IGI Report No LG752530082
SQUARE CUSHION ROSE CUT

4.36 CARATS
Carat Weight
FANCY VIVID PINK
Color Grade

VS 2
Clarity Grade

0%
Depth
0%
Table
Thick To Extremely Thick
Girdle

EXCELLENT
VERY GOOD
STRONG
Polish
Symmetry
Fluorescence
Inscription(s)
IGI LG752530082

Comments: This Laboratory Grown Diamond was created by Chemical Vapor Deposition (CVD) growth process. Indications of post-growth treatment.