



**ELECTRONIC COPY**

LG752530038  
Report verification at igi.org



December 5, 2025  
IGI Report Number **LG752530038**  
Description **LABORATORY GROWN DIAMOND**  
Shape and Cutting Style **OCTAGONAL MODIFIED BRILLIANT**  
Measurements **6.13 X 6.14 X 4.01 MM**  
**GRADING RESULTS**  
Carat Weight **1.05 CARAT**  
Color Grade **F**  
Clarity Grade **VVS 2**

**LABORATORY GROWN DIAMOND REPORT**

December 5, 2025  
IGI Report Number **LG752530038**  
Description **LABORATORY GROWN DIAMOND**  
Shape and Cutting Style **OCTAGONAL MODIFIED BRILLIANT**  
Measurements **6.13 X 6.14 X 4.01 MM**

**GRADING RESULTS**

Carat Weight **1.05 CARAT**  
Color Grade **F**  
Clarity Grade **VVS 2**

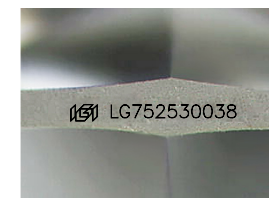
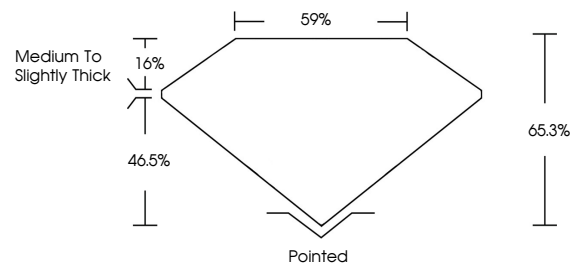
**ADDITIONAL GRADING INFORMATION**

Polish **EXCELLENT**  
Symmetry **EXCELLENT**  
Fluorescence **NONE**

Inscription(s) **IGI LG752530038**

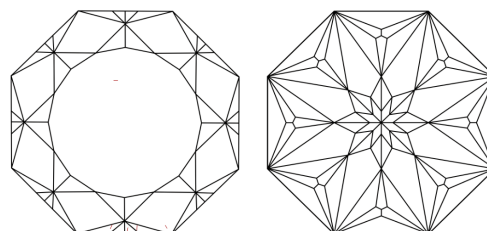
Comments: As Grown - No indication of post-growth treatment.  
This Laboratory Grown Diamond was created by High Pressure High Temperature (HPHT) growth process.  
Type II

**PROPORTIONS**



Sample Image Used

**CLARITY CHARACTERISTICS**



**KEY TO SYMBOLS**

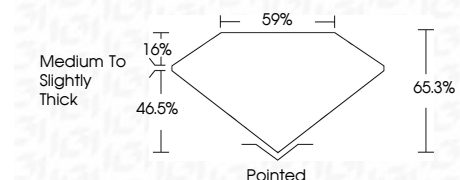
Red symbols indicate internal characteristics.  
Green symbols indicate external characteristics.

**COLOR**

D E F G H I J Faint Very Light Light

**CLARITY**

FL	IF	VVS <sup>1-2</sup>	VS <sup>1-2</sup>	SI <sup>1-2</sup>	I <sup>1-3</sup>
Flawless	Internally Flawless	Very Very Slightly Included	Very Slightly Included	Slightly Included	Included



**ADDITIONAL GRADING INFORMATION**

Polish **EXCELLENT**  
Symmetry **EXCELLENT**  
Fluorescence **NONE**  
Inscription(s) **IGI LG752530038**  
Comments: As Grown - No indication of post-growth treatment.  
This Laboratory Grown Diamond was created by High Pressure High Temperature (HPHT) growth process.  
Type II



December 5, 2025  
IGI Report No. **LG752530038**  
**OCTAGONAL MODIFIED BRILLIANT**  
**6.13 X 6.14 X 4.01 MM**  
Carat Weight **1.05 CARAT**  
Color Grade **F**  
Clarity Grade **VVS 2**  
Depth **46.5%**  
Table **16%**  
Girdle **Medium to Slightly Thick**  
Culet **Pointed**  
Polish **EXCELLENT**  
Symmetry **EXCELLENT**  
Fluorescence **NONE**  
Inscription(s) **IGI LG752530038**  
Comments: As Grown - No indication of post-growth treatment.  
This Laboratory Grown Diamond was created by High Pressure High Temperature (HPHT) growth process.  
Type II