



ELECTRONIC COPY

LG752525126
Report verification at igi.org



November 29, 2025

IGI Report Number **LG752525126**

Description **LABORATORY GROWN DIAMOND**

Shape and Cutting Style **ROUND BRILLIANT**

Measurements **11.67 - 11.75 X 7.06 MM**

GRADING RESULTS

Carat Weight **6.01 CARATS**

Color Grade **F**

Clarity Grade **VVS 2**

Cut Grade **EXCELLENT**

November 29, 2025
IGI Report Number **LG752525126**
Description **LABORATORY GROWN DIAMOND**
Shape and Cutting Style **ROUND BRILLIANT**
Measurements **11.67 - 11.75 X 7.06 MM**

GRADING RESULTS

Carat Weight **6.01 CARATS**

Color Grade **F**

Clarity Grade **VVS 2**

Cut Grade **EXCELLENT**

ADDITIONAL GRADING INFORMATION

Polish **EXCELLENT**

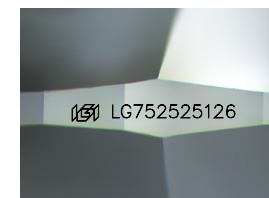
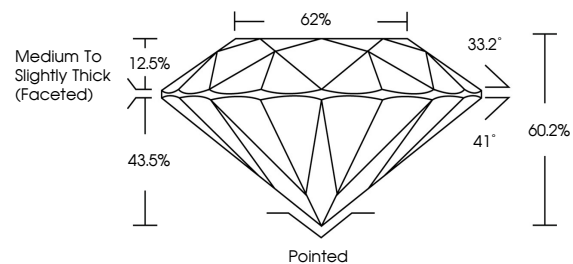
Symmetry **EXCELLENT**

Fluorescence **NONE**

Inscription(s) **IGI LG752525126**

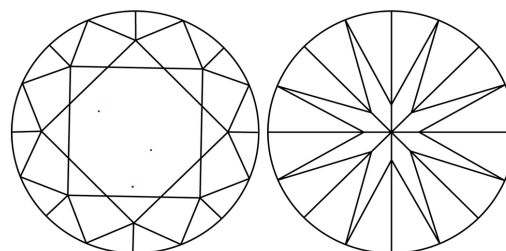
Comments: This Laboratory Grown Diamond was created by Chemical Vapor Deposition (CVD) growth process.
Type IIa

PROPORTIONS



Sample Image Used

CLARITY CHARACTERISTICS



KEY TO SYMBOLS

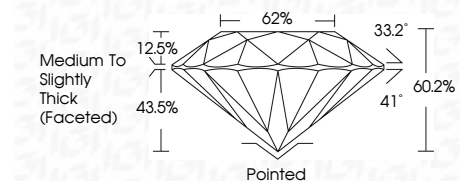
Red symbols indicate internal characteristics.
Green symbols indicate external characteristics.

COLOR

D E F G H I J Faint Very Light Light

CLARITY

FL	IF	VVS ¹⁻²	VS ¹⁻²	SI ¹⁻²	I ¹⁻³
Flawless	Internally Flawless	Very Very Slightly Included	Very Slightly Included	Slightly Included	Included



ADDITIONAL GRADING INFORMATION

Polish **EXCELLENT**

Symmetry **EXCELLENT**

Fluorescence **NONE**

Inscription(s) **IGI LG752525126**

Comments: This Laboratory Grown Diamond was created by Chemical Vapor Deposition (CVD) growth process.
Type IIa



IGI



November 29, 2025
IGI Report No LG752525126
ROUND BRILLIANT

6.01 CARATS
Carat Weight
Color Grade **F**
Clarity Grade **VVS 2**
Cut Grade **EXCELLENT**
Depth **60.2%**
Table **62%**
Girdle **Medium To Slightly Thick (Faceted)**

Culet **Pointed**
Polish **EXCELLENT**
Symmetry **EXCELLENT**
Fluorescence **NONE**
Inscription(s) **IGI LG752525126**

Comments: This Laboratory Grown Diamond was created by Chemical Vapor Deposition (CVD) growth process.
Type IIa