



**ELECTRONIC COPY**

## LABORATORY GROWN DIAMOND REPORT

LG752523506  
Report verification at [igi.org](https://igi.org)

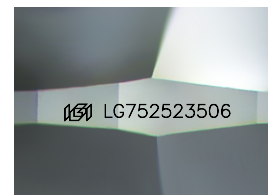
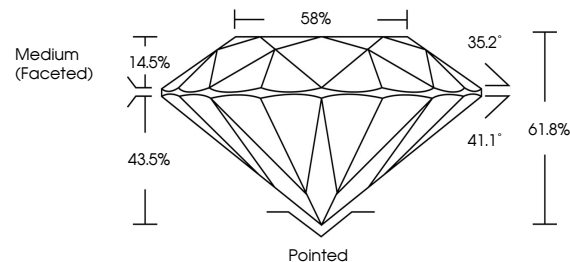
December 5, 2025	
IGI Report Number	LG752523506
Description	LABORATORY GROWN DIAMOND
Shape and Cutting Style	ROUND BRILLIANT
Measurements	6.44 - 6.48 X 3.99 MM
GRADING RESULTS	
Carat Weight	1.02 CARAT
Color Grade	E
Clarity Grade	VVS 1
Cut Grade	IDEAL

### ADDITIONAL GRADING INFORMATION

Polish	EXCELLENT
Symmetry	EXCELLENT
Fluorescence	NONE
Inscription(s)	15 LG752523506

Comments: This Laboratory Grown Diamond was created by Chemical Vapor Deposition (CVD) growth process.  
Type IIa

## PROPORTIONS



Sample Image Used

## COLOR

D E F G H I J Faint Very Light Light

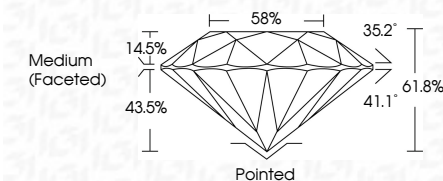
## CLARITY

FL	IF	VVS <sup>1-2</sup>	VS <sup>1-2</sup>	SI <sup>1-2</sup>	I <sup>1-3</sup>
Flawless	Internally Flawless	Very Very Slightly Included	Very Slightly Included	Slightly Included	Included

## LABORATORY GROWN DIAMOND REPORT



December 5, 2025	
IGI Report Number	LG752523506
Description	LABORATORY GROWN DIAMOND
Shape and Cutting Style	ROUND BRILLIANT
Measurements	6.44 - 6.48 X 3.99 MM
GRADING RESULTS	
Carat Weight	1.02 CARAT
Color Grade	E
Clarity Grade	VVS 1
Cut Grade	IDEAL



### ADDITIONAL GRADING INFORMATION

Polish	EXCELLENT
Symmetry	EXCELLENT
Fluorescence	NONE
Inscription(s)	(修) LG752523506

Comments: This Laboratory Grown Diamond was created by Chemical Vapor Deposition (CVD) growth process.

Type IIa



© IGI 2020, International Gemological Institute

FD - 10 20



THIS DOCUMENT WAS PRODUCED WITH THE FOLLOWING SECURITY MEASURES: SPECIAL DOCUMENT PAPER, INK SCREENS, WATERMARK, BACKGROUND DESIGNS, HOLOGRAM AND OTHER SECURITY FEATURES NOT LISTED AND DO EXCEED DOCUMENT SECURITY INDUSTRY GUIDELINES

**www.igi.org**

December 5, 2025  
IGI Report No LG752523506  
ROUND BRILLIANT

6.44 - 6.48 X 3.99 MM

6.44 - 6.48 X 3.99 MM  
Carat Weight 1.02 CARAT

Catali Weiglin	1.02 CARAT
Color Grade	E

Clarity Grade	WS 1
FL	
IF	
VS1	
VS2	
V1	
V2	
I1	
I2	
I3	
S1	
S2	
S3	
P1	
P2	
P3	
SI	

Cut Grade	IDEAL
Depth	41.00%

Depth	61.8%
Table	58%

Girdle	Medium (Faceted)	002

[illegible]

Culet	Pointed
Polish	EXCELLENT

Posit

Symmetry

EXCELLENT

EXCELLENT

Fluorescence	NONE
Inscription(s)	1681 G752523506

Inspection(\$)

**Comments:**  
This Laboratory Grown Diamond was

created by Chemical Vapor Deposition (CVD) growth process.

Type IIa