



**ELECTRONIC COPY**

LG752523469  
Report verification at igi.org



November 28, 2025

IGI Report Number **LG752523469**

Description **LABORATORY GROWN DIAMOND**

Shape and Cutting Style **ROUND BRILLIANT**

Measurements **9.02 - 9.08 X 5.73 MM**

**GRADING RESULTS**

Carat Weight **2.94 CARATS**

Color Grade **E**

Clarity Grade **VVS 2**

Cut Grade **EXCELLENT**

November 28, 2025  
IGI Report Number **LG752523469**  
Description **LABORATORY GROWN DIAMOND**  
Shape and Cutting Style **ROUND BRILLIANT**  
Measurements **9.02 - 9.08 X 5.73 MM**

**GRADING RESULTS**

Carat Weight **2.94 CARATS**

Color Grade **E**

Clarity Grade **VVS 2**

Cut Grade **EXCELLENT**

**ADDITIONAL GRADING INFORMATION**

Polish **EXCELLENT**

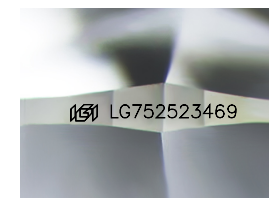
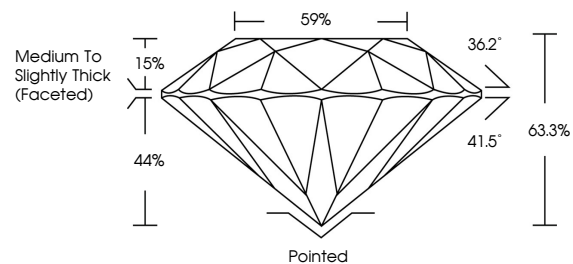
Symmetry **EXCELLENT**

Fluorescence **NONE**

Inscription(s) **LG752523469**

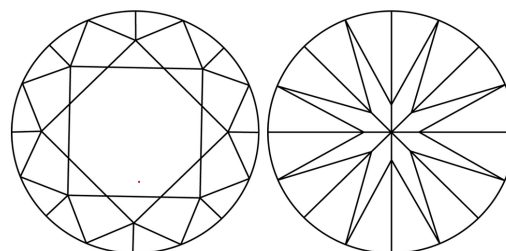
Comments: This Laboratory Grown Diamond was created by Chemical Vapor Deposition (CVD) growth process.  
Type IIa

**PROPORTIONS**



Sample Image Used

**CLARITY CHARACTERISTICS**



**KEY TO SYMBOLS**

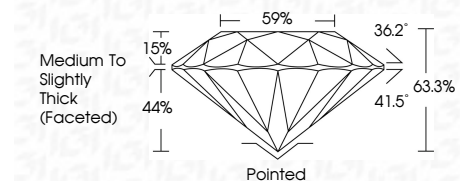
Red symbols indicate internal characteristics.  
Green symbols indicate external characteristics.

**COLOR**

D E F G H I J Faint Very Light Light

**CLARITY**

FL	IF	VVS <sup>1-2</sup>	VS <sup>1-2</sup>	SI <sup>1-2</sup>	I <sup>1-3</sup>
Flawless	Internally Flawless	Very Very Slightly Included	Very Slightly Included	Slightly Included	Included



**ADDITIONAL GRADING INFORMATION**

Polish **EXCELLENT**

Symmetry **EXCELLENT**

Fluorescence **NONE**

Inscription(s) **LG752523469**

Comments: This Laboratory Grown Diamond was created by Chemical Vapor Deposition (CVD) growth process.  
Type IIa



**IGI**



November 28, 2025  
IGI Report No **LG752523469**  
**ROUND BRILLIANT**

**2.94 CARATS**  
E  
Color Grade  
**VVS 2**  
Clarity Grade  
**EXCELLENT**  
Depth  
**63.3%**  
Table  
**59%**  
Girdle  
**Medium To Slightly Thick (Faceted)**

Culet  
**Pointed**  
Polish  
**EXCELLENT**  
Symmetry  
**EXCELLENT**  
Fluorescence  
**NONE**  
Inscription(s)  
 **LG752523469**

Comments: This Laboratory Grown Diamond was created by Chemical Vapor Deposition (CVD) growth process.  
Type IIa