



**ELECTRONIC COPY**

LG752521637  
Report verification at igi.org



November 27, 2025

IGI Report Number **LG752521637**

Description **LABORATORY GROWN DIAMOND**

Shape and Cutting Style **ROUND BRILLIANT**

Measurements **9.29 - 9.31 X 5.54 MM**

**GRADING RESULTS**

Carat Weight **2.93 CARATS**

Color Grade **D**

Clarity Grade **VS 1**

Cut Grade **IDEAL**

November 27, 2025  
IGI Report Number **LG752521637**  
Description **LABORATORY GROWN DIAMOND**  
Shape and Cutting Style **ROUND BRILLIANT**  
Measurements **9.29 - 9.31 X 5.54 MM**

**GRADING RESULTS**

Carat Weight **2.93 CARATS**

Color Grade **D**

Clarity Grade **VS 1**

Cut Grade **IDEAL**

**ADDITIONAL GRADING INFORMATION**

Polish **EXCELLENT**

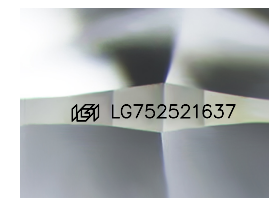
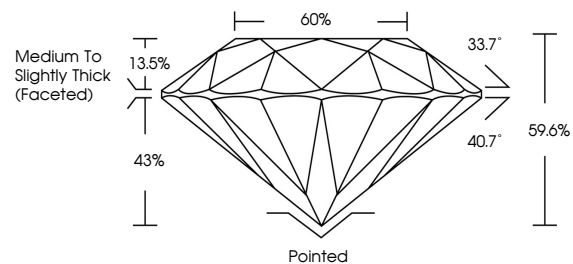
Symmetry **EXCELLENT**

Fluorescence **NONE**

Inscription(s) **IGI LG752521637**

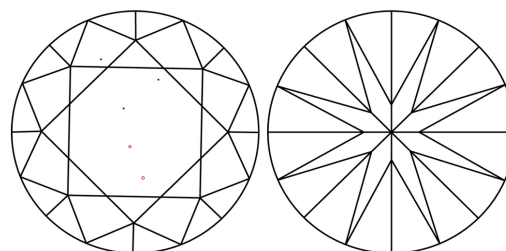
Comments: This Laboratory Grown Diamond was created by Chemical Vapor Deposition (CVD) growth process. Type IIa

**PROPORTIONS**



Sample Image Used

**CLARITY CHARACTERISTICS**



**KEY TO SYMBOLS**

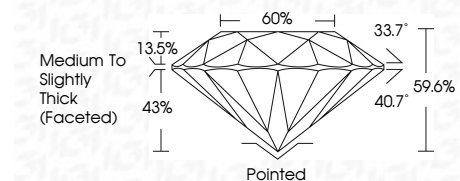
Red symbols indicate internal characteristics.  
Green symbols indicate external characteristics.

**COLOR**

D E F G H I J Faint Very Light Light

**CLARITY**

FL	IF	VS <sup>1-2</sup>	VS <sup>1-2</sup>	SI <sup>1-2</sup>	I <sup>1-3</sup>
Flawless	Internally Flawless	Very Very Slightly Included	Very Slightly Included	Slightly Included	Included



**ADDITIONAL GRADING INFORMATION**

Polish **EXCELLENT**

Symmetry **EXCELLENT**

Fluorescence **NONE**

Inscription(s) **IGI LG752521637**

Comments: This Laboratory Grown Diamond was created by Chemical Vapor Deposition (CVD) growth process. Type IIa



**IGI**



November 27, 2025  
IGI Report No LG752521637  
**ROUND BRILLIANT**

**2.93 CARATS**  
D

**VS 1**  
IDEAL

**9.29 - 9.31 X 5.54 MM**  
59.6%  
60%  
Medium To Slightly Thick (Faceted)

**Pointed**  
EXCELLENT  
EXCELLENT  
NONE  
IGI LG752521637

Culet  
Polish  
Symmetry  
Fluorescence  
Inscription(s)

Comments: This Laboratory Grown Diamond was created by Chemical Vapor Deposition (CVD) growth process. Type IIa