



INTERNATIONAL GEMOLOGICAL INSTITUTE

ELECTRONIC COPY

LABORATORY GROWN DIAMOND REPORT

November 27, 2025

IGI Report Number

LG752521413

Description

LABORATORY GROWN DIAMOND

Shape and Cutting Style

PRINCESS CUT

Measurements

4.30 X 4.25 X 3.23 MM

GRADING RESULTS

Carat Weight

0.55 CARAT

Color Grade

FANCY VIVID GREEN

Clarity Grade

VS 1

ADDITIONAL GRADING INFORMATION

Polish

VERY GOOD

Symmetry

GOOD

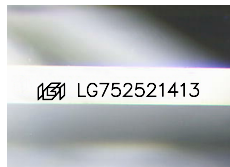
Fluorescence

NONE

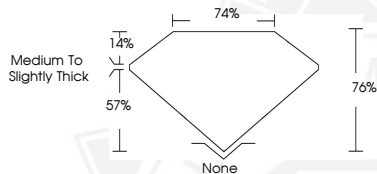
Inscription(s)

IGI LG752521413

Comments: This Laboratory Grown Diamond was created by High Pressure High Temperature (HPHT) growth process. Indications of post-growth treatment.



Sample Image Used



November 27, 2025

IGI Report Number LG752521413

PRINCESS CUT

LABORATORY GROWN DIAMOND

4.30 X 4.25 X 3.23 MM

Carat Weight 0.55 CARAT

Color Grade FANCY VIVID GREEN

Clarity Grade VS 1

Polish VERY GOOD

Symmetry GOOD

Fluorescence NONE

Inscription(s) IGI LG752521413

Comments: This Laboratory Grown Diamond was created by High Pressure High Temperature (HPHT) growth process. Indications of post-growth treatment.



November 27, 2025

IGI Report Number LG752521413

PRINCESS CUT

LABORATORY GROWN DIAMOND

4.30 X 4.25 X 3.23 MM

Carat Weight 0.55 CARAT

Color Grade FANCY VIVID GREEN

Clarity Grade VS 1

Polish VERY GOOD

Symmetry GOOD

Fluorescence NONE

Inscription(s) IGI LG752521413

Comments: This Laboratory Grown Diamond was created by High Pressure High Temperature (HPHT) growth process. Indications of post-growth treatment.



THIS DOCUMENT WAS PRODUCED WITH THE FOLLOWING SECURITY MEASURES: SPECIAL DOCUMENT PAPER, INK SCREENS, WATERMARK, BACKGROUND DESIGNS, HOLOGRAM AND OTHER SECURITY FEATURES NOT LISTED AND DO EXCEED DOCUMENT SECURITY INDUSTRY GUIDELINES.

For terms & conditions and to verify this report, please visit www.igi.org