



November 28, 2025

IGI Report Number LG752521371
ROUND BRILLIANT
LABORATORY GROWN DIAMOND
5.70 - 5.73 X 3.54 MM

Carat Weight 0.70 CARAT
Color Grade FANCY VIVID BLUE
Clarity Grade VVS 2
Cut Grade IDEAL
Polish EXCELLENT
Symmetry VERY GOOD
Fluorescence NONE
Inscription(s) IGI LG752521371

Comments: This Laboratory Grown Diamond was created by Chemical Vapor Deposition (CVD) growth process. Indications of post-growth treatment.

LABORATORY GROWN DIAMOND REPORT

November 28, 2025
IGI Report Number **LG752521371**
Description **LABORATORY GROWN DIAMOND**
Shape and Cutting Style **ROUND BRILLIANT**
Measurements **5.70 - 5.73 X 3.54 MM**

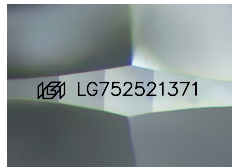
GRADING RESULTS

Carat Weight 0.70 CARAT
Color Grade FANCY VIVID BLUE
Clarity Grade VVS 2
Cut Grade IDEAL

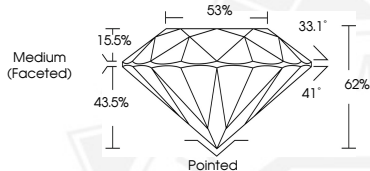
ADDITIONAL GRADING INFORMATION

Polish EXCELLENT
Symmetry VERY GOOD
Fluorescence NONE
Inscription(s) IGI LG752521371

Comments: This Laboratory Grown Diamond was created by Chemical Vapor Deposition (CVD) growth process. Indications of post-growth treatment.



Sample Image Used



November 28, 2025

IGI Report Number LG752521371
ROUND BRILLIANT
LABORATORY GROWN DIAMOND
5.70 - 5.73 X 3.54 MM

Carat Weight 0.70 CARAT
Color Grade FANCY VIVID BLUE
Clarity Grade VVS 2
Cut Grade IDEAL
Polish EXCELLENT
Symmetry VERY GOOD
Fluorescence NONE
Inscription(s) IGI LG752521371

Comments: This Laboratory Grown Diamond was created by Chemical Vapor Deposition (CVD) growth process. Indications of post-growth treatment.



THIS DOCUMENT WAS PRODUCED WITH THE FOLLOWING SECURITY MEASURES: SPECIAL DOCUMENT PAPER, INK SCREENS, WATERMARK, BACKGROUND DESIGNS, HOLOGRAM AND OTHER SECURITY FEATURES NOT LISTED AND DO EXCEED DOCUMENT SECURITY INDUSTRY GUIDELINES.