



ELECTRONIC COPY

LG752508486
Report verification at igi.org



November 27, 2025
IGI Report Number **LG752508486**
Description **LABORATORY GROWN DIAMOND**
Shape and Cutting Style **CUT CORNERED
RECTANGULAR MODIFIED
BRILLIANT**
Measurements **10.15 X 7.25 X 4.84 MM**
GRADING RESULTS
Carat Weight **3.07 CARATS**
Color Grade **D**
Clarity Grade **VS 1**

November 27, 2025
IGI Report Number **LG752508486**
Description **LABORATORY GROWN DIAMOND**
Shape and Cutting Style **CUT CORNERED RECTANGULAR
MODIFIED BRILLIANT**
Measurements **10.15 X 7.25 X 4.84 MM**

GRADING RESULTS

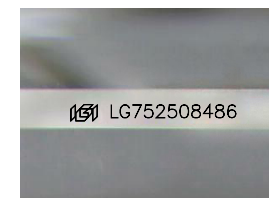
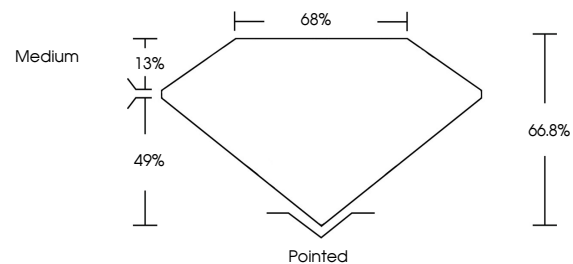
Carat Weight **3.07 CARATS**
Color Grade **D**
Clarity Grade **VS 1**

ADDITIONAL GRADING INFORMATION

Polish **EXCELLENT**
Symmetry **EXCELLENT**
Fluorescence **NONE**
Inscription(s) **IGI LG752508486**

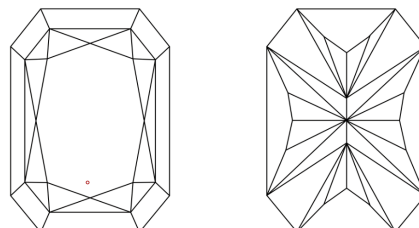
Comments: This Laboratory Grown Diamond was created by Chemical Vapor Deposition (CVD) growth process.
Type IIa

PROPORTIONS



Sample Image Used

CLARITY CHARACTERISTICS



KEY TO SYMBOLS

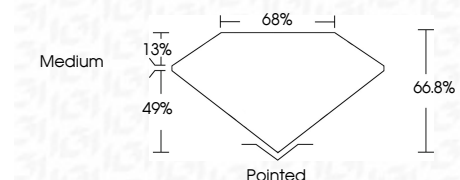
Red symbols indicate internal characteristics.
Green symbols indicate external characteristics.

COLOR

D E F G H I J Faint Very Light Light

CLARITY

FL	IF	VS ¹⁻²	VS ¹⁻²	SI ¹⁻²	I ¹⁻³
Flawless	Internally Flawless	Very Very Slightly Included	Very Slightly Included	Slightly Included	Included



ADDITIONAL GRADING INFORMATION

Polish **EXCELLENT**
Symmetry **EXCELLENT**
Fluorescence **NONE**
Inscription(s) **IGI LG752508486**
Comments: This Laboratory Grown Diamond was created by Chemical Vapor Deposition (CVD) growth process.
Type IIa



November 27, 2025
IGI Report No LG752508486
CUT CORNERED RECT. MODIFIED BRILLIANT
3.07 CARATS
D
3.07 CARATS
D
VS 1
66.8%
49%
68%
Medium
Pointed
EXCELLENT
EXCELLENT
NONE
IGI LG752508486

Comments: This Laboratory Grown Diamond was created by Chemical Vapor Deposition (CVD) growth process.
Type IIa