



ELECTRONIC COPY

LABORATORY GROWN DIAMOND REPORT

November 26, 2025
IGI Report Number LG752508082
Description LABORATORY GROWN DIAMOND
Shape and Cutting Style CUT CORNERED SQUARE MODIFIED BRILLIANT
Measurements 7.90 X 7.85 X 5.20 MM

GRADING RESULTS

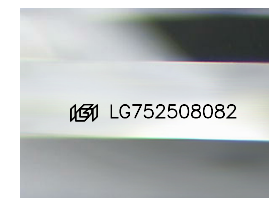
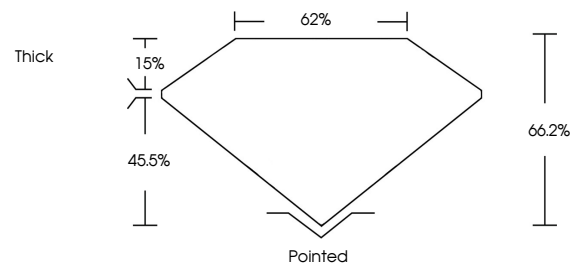
Carat Weight 3.00 CARATS
Color Grade D
Clarity Grade VVS 1

ADDITIONAL GRADING INFORMATION

Polish EXCELLENT
Symmetry EXCELLENT
Fluorescence NONE
Inscription(s) LG752508082

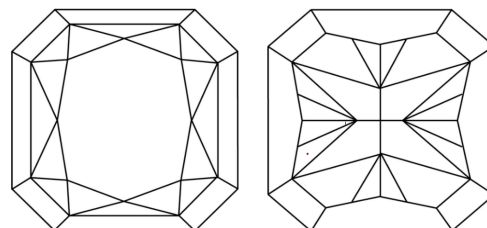
Comments: This Laboratory Grown Diamond was created by Chemical Vapor Deposition (CVD) growth process.
Type IIa

PROPORTIONS



Sample Image Used

CLARITY CHARACTERISTICS



KEY TO SYMBOLS

Red symbols indicate internal characteristics.
Green symbols indicate external characteristics.

COLOR

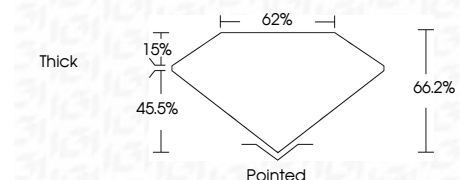
D E F G H I J Faint Very Light Light

CLARITY

FL IF VVS¹⁻² VS¹⁻² SI¹⁻² I¹⁻³
Flawless Internally Flawless Very Very Slightly Included Very Slightly Included Slightly Included Included



November 26, 2025
IGI Report Number LG752508082
Description LABORATORY GROWN DIAMOND
Shape and Cutting Style CUT CORNERED SQUARE MODIFIED BRILLIANT
Measurements 7.90 X 7.85 X 5.20 MM
GRADING RESULTS
Carat Weight 3.00 CARATS
Color Grade D
Clarity Grade VVS 1



ADDITIONAL GRADING INFORMATION

Polish EXCELLENT
Symmetry EXCELLENT
Fluorescence NONE
Inscription(s) LG752508082
Comments: This Laboratory Grown Diamond was created by Chemical Vapor Deposition (CVD) growth process.
Type IIa



November 26, 2025
IGI Report No LG752508082
CUT CORNERED SQUARE MODIFIED BRILLIANT
7.90 X 7.85 X 5.20 MM
3.00 CARATS
D
VVS 1
66.2%
62%
Thick
Pointed
EXCELLENT
EXCELLENT
NONE
NONE
 LG752508082
Comments: This Laboratory Grown Diamond was created by Chemical Vapor Deposition (CVD) growth process.
Type IIa