



**ELECTRONIC COPY**

## LABORATORY GROWN DIAMOND REPORT

|                         |                          |
|-------------------------|--------------------------|
| November 26, 2025       |                          |
| IGI Report Number       | LG752507958              |
| Description             | LABORATORY GROWN DIAMOND |
| Shape and Cutting Style | ROUND BRILLIANT          |
| Measurements            | 6.46 - 6.51 X 4.07 MM    |

## GRADING RESULTS

|               |            |
|---------------|------------|
| Carat Weight  | 1.05 CARAT |
| Color Grade   | D          |
| Clarity Grade | VVS 2      |
| Cut Grade     | EXCELLENT  |

### ADDITIONAL GRADING INFORMATION

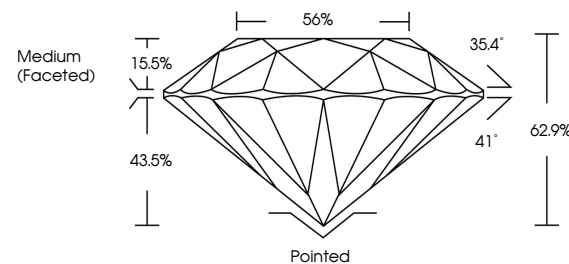
|                |   |
|----------------|---|
| Polish         | VERY GOOD   |
| Symmetry       | EXCELLENT   |
| Fluorescence   | NONE  |
| Inscription(s) |  LG752507958 |

Comments: As Grown - No indication of post-growth treatment.

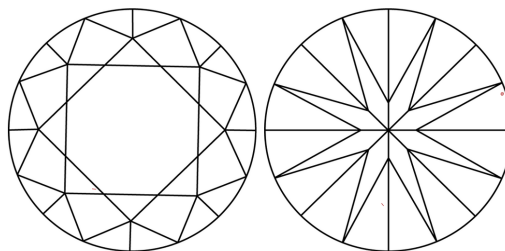
This Laboratory Grown Diamond was created by High Pressure High Temperature (HPHT) growth process.  
Type II

LG752507958  
Report verification at [lgi.org](https://lgi.org)

## PROPORTIONS

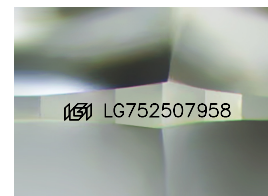


## CLARITY CHARACTERISTICS



## KEY TO SYMBOLS

Red symbols indicate internal characteristics.  
Green symbols indicate external characteristics.



Sample Image Used

## COLOR

D E F G H I J Faint Very Light Light

## CLARITY

| FL       | IF                  | VVS <sup>1-2</sup>          | VS <sup>1-2</sup>      | SI <sup>1-2</sup> | I <sup>1-3</sup> |
|----------|---------------------|-----------------------------|------------------------|-------------------|------------------|
| Flawless | Internally Flawless | Very Very Slightly Included | Very Slightly Included | Slightly Included | Included         |

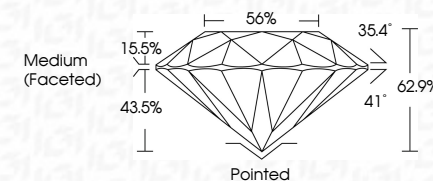
## LABORATORY GROWN DIAMOND REPORT



|                         |                          |
|-------------------------|--------------------------|
| November 26, 2025       |                          |
| IGI Report Number       | LG752507958              |
| Description             | LABORATORY GROWN DIAMOND |
| Shape and Cutting Style | ROUND BRILLIANT          |
| Measurements            | 6.46 - 6.51 X 4.07 MM    |

## GRADING RESULTS

|               |            |
|---------------|------------|
| Carat Weight  | 1.05 CARAT |
| Color Grade   | D          |
| Clarity Grade | VVS 2      |
| Cut Grade     | EXCELLENT  |



### ADDITIONAL GRADING INFORMATION

|  |                           |
|--|---------------------------|
| Polish   | VERY GOOD                 |
| Symmetry   | EXCELLENT                 |
| Fluorescence   | NONE                      |
| Inscription(s)   | <del>LG</del> LG752507958 |
| Comments: As Grown - No indication of post-growth treatment.                                       |                           |
| This Laboratory Grown Diamond was created by High Pressure High Temperature (HPHT) growth process. |                           |
| Type II  |                           |



© IGI 2020, International Gemological Institute

FD - 10 20

**www.igi.org**

THIS DOCUMENT WAS PRODUCED WITH THE FOLLOWING SECURITY MEASURES: SPECIAL DOCUMENT PAPER, INK SCREENS, WATERMARK, BACKGROUND DESIGNS, HOLOGRAM AND OTHER SECURITY FEATURES NOT LISTED AND DO EXCEED DOCUMENT SECURITY INDUSTRY GUIDELINES

November 26, 2025  
GI Report No LG752507958  
ROUND BRILLIANT

|               |                  |
|---------------|------------------|
| Carat Weight  | 1.05 CARAT       |
| Color Grade   | D                |
| Clarity Grade | VVS 2            |
| Cut Grade     | EXCELLENT        |
| Depth         | 62.9%            |
| Table         | 56%              |
| Girdle        | Medium (Faceted) |
| Culet         | Pointed          |
| Polish        | VERY GOOD        |
| Symmetry      | EXCELLENT        |
| Fluorescence  | NONE             |

**Comments:**  
As Grown - No indication of post-growth treatment.  
This Laboratory Grown Diamond was created by High Pressure High Temperature (HPHT) growth process.