



ELECTRONIC COPY

LG752502122
Report verification at igi.org



November 28, 2025
IGI Report Number **LG752502122**
Description **LABORATORY GROWN DIAMOND**
Shape and Cutting Style **SQUARE CUSHION MODIFIED BRILLIANT**
Measurements **7.12 X 6.95 X 4.58 MM**
GRADING RESULTS
Carat Weight **2.02 CARATS**
Color Grade **FANCY LIGHT YELLOW**
Clarity Grade **VS 1**

November 28, 2025
IGI Report Number **LG752502122**
Description **LABORATORY GROWN DIAMOND**
Shape and Cutting Style **SQUARE CUSHION MODIFIED BRILLIANT**
Measurements **7.12 X 6.95 X 4.58 MM**

GRADING RESULTS

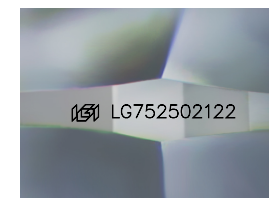
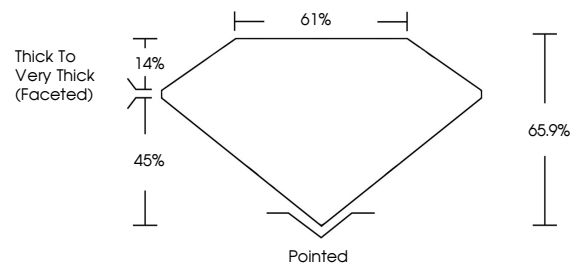
Carat Weight **2.02 CARATS**
Color Grade **FANCY LIGHT YELLOW**
Clarity Grade **VS 1**

ADDITIONAL GRADING INFORMATION

Polish **EXCELLENT**
Symmetry **EXCELLENT**
Fluorescence **NONE**
Inscription(s) **IGI LG752502122**

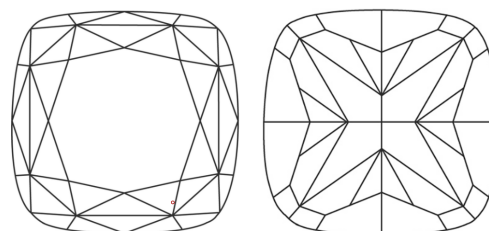
Comments: This Laboratory Grown Diamond was created by Chemical Vapor Deposition (CVD) growth process.

PROPORTIONS



Sample Image Used

CLARITY CHARACTERISTICS



KEY TO SYMBOLS

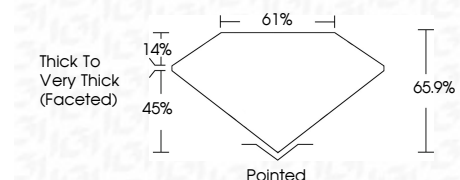
Red symbols indicate internal characteristics.
Green symbols indicate external characteristics.

COLOR

D E F G H I J Faint Very Light Light

CLARITY

FL IF VS¹⁻² VS¹⁻² SI¹⁻² I¹⁻³
Flawless Internally Flawless Very Very Slightly Included Very Slightly Included Slightly Included Included



ADDITIONAL GRADING INFORMATION

Polish **EXCELLENT**
Symmetry **EXCELLENT**
Fluorescence **NONE**
Inscription(s) **IGI LG752502122**
Comments: This Laboratory Grown Diamond was created by Chemical Vapor Deposition (CVD) growth process.



IGI



November 28, 2025
IGI Report No **LG752502122**
SQUARE CUSHION MODIFIED BRILLIANT
7.12 X 6.95 X 4.58 MM
2.02 CARATS
Carat Weight
Color Grade **FANCY LIGHT YELLOW**
Clarity Grade **VS 1**
Depth **65.9%**
Table **61%**
Girdle
Thick to Very Thick (Faceted)
Culet **Pointed**
Polish **EXCELLENT**
Symmetry **EXCELLENT**
Fluorescence **NONE**
Inscription(s) **IGI LG752502122**
Comments: This Laboratory Grown Diamond was created by Chemical Vapor Deposition (CVD) growth process.