



ELECTRONIC COPY

LG752501715
Report verification at igi.org



December 1, 2025
IGI Report Number **LG752501715**
Description **LABORATORY GROWN DIAMOND**
Shape and Cutting Style **CUSHION MODIFIED BRILLIANT**
Measurements **11.59 X 8.27 X 5.75 MM**
GRADING RESULTS
Carat Weight **5.03 CARATS**
Color Grade **FANCY VIVID GREEN**
Clarity Grade **SI 1**

LABORATORY GROWN DIAMOND REPORT

December 1, 2025
IGI Report Number **LG752501715**
Description **LABORATORY GROWN DIAMOND**
Shape and Cutting Style **CUSHION MODIFIED BRILLIANT**
Measurements **11.59 X 8.27 X 5.75 MM**

GRADING RESULTS

Carat Weight **5.03 CARATS**
Color Grade **FANCY VIVID GREEN**
Clarity Grade **SI 1**

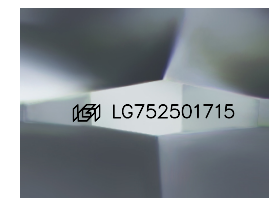
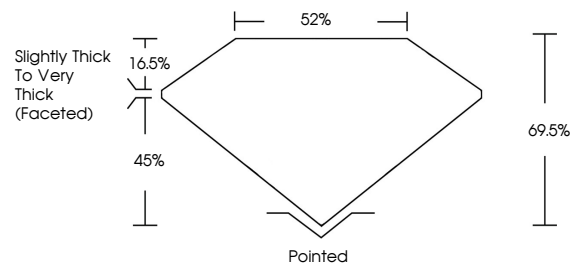
ADDITIONAL GRADING INFORMATION

Polish **EXCELLENT**
Symmetry **EXCELLENT**
Fluorescence **NONE**
Inscription(s) **IGI LG752501715**

Comments: This Laboratory Grown Diamond was created by Chemical Vapor Deposition (CVD) growth process.
Indications of post-growth treatment.

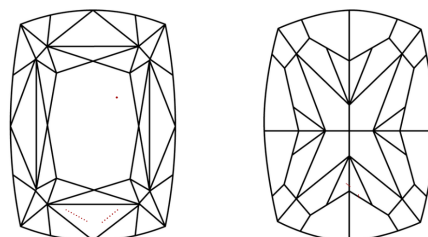
Secondary color: Blue

PROPORTIONS



Sample Image Used

CLARITY CHARACTERISTICS



KEY TO SYMBOLS

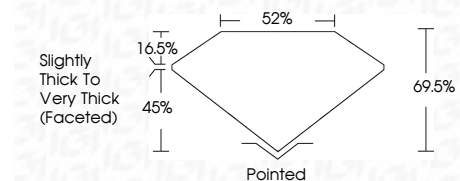
Red symbols indicate internal characteristics.
Green symbols indicate external characteristics.

COLOR

D E F G H I J Faint Very Light Light

CLARITY

FL	IF	VS ¹⁻²	VS ¹⁻²	SI ¹⁻²	I ¹⁻³
Flawless	Internally Flawless	Very Very Slightly Included	Very Slightly Included	Slightly Included	Included



ADDITIONAL GRADING INFORMATION

Polish **EXCELLENT**
Symmetry **EXCELLENT**
Fluorescence **NONE**
Inscription(s) **IGI LG752501715**
Comments: This Laboratory Grown Diamond was created by Chemical Vapor Deposition (CVD) growth process.
Indications of post-growth treatment.
Secondary color: Blue



December 1, 2025
IGI Report No LG752501715
CUSHION MODIFIED BRILLIANT
11.59 X 8.27 X 5.75 MM
5.03 CARATS
FANCY VIVID GREEN
SI 1
69.5%
45%
Slightly Thick To Very Thick (Faceted)
Pointed
EXCELLENT
EXCELLENT
NONE
IGI LG752501715
Comments: This Laboratory Grown Diamond was created by Chemical Vapor Deposition (CVD) growth process.
Indications of post-growth treatment.
Secondary color: Blue